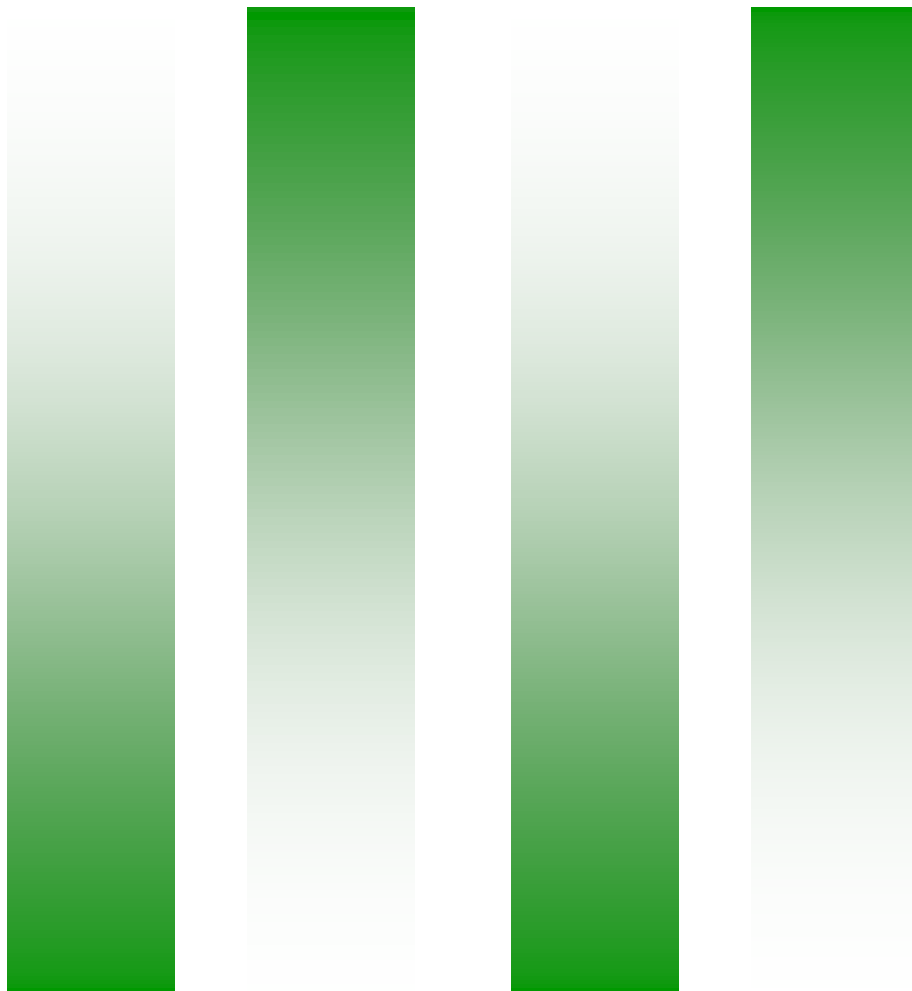




# Developmental Education Plan 2009-2010



## Table of Contents

Introduction.....	1
Developmental Education Instructional Programs.....	4
Math.....	4
Reading.....	4
Basic Academic Skills.....	5
English.....	5
English-as-a-Second Language.....	6
Application of Assessment Requirements.....	7
Criteria for Meeting Assessment Requirements.....	10
Critical Information for Academic Advising.....	12
Program Evaluation.....	14
Accountability.....	15
<b>APPENDICES</b>	
Appendix A Organizational Chart .....	A-1
Appendix B Dual Credit Testing Requirements.....	B-1
Appendix C Testing Requirements for Certificate Programs.....	C-1- C10
Appendix D Score Comparison Sheet.....	D-1

# INTRODUCTION

## Background of the Developmental Education Program

The Amarillo College developmental education program began in 1974. As the institution searched for ways to provide access to all students, the need for expanded services for developmental students was recognized.

The ACcess program was established to meet this need, and in 1980 the ACcess Division became one of eight academic divisions at Amarillo College. (Appendix A)

In 1989, the Texas legislature introduced the Texas Academic Skills Program (TASP), designed to provide a benchmark of college readiness by all Texas higher education institutions. In 2003, the legislature repealed TASP legislation and replaced it with the Texas Success Initiative. This program uses assessment, advising and remediation to ensure that students have college-level skills. The Amarillo College Developmental Education Plan includes the implementation of the Texas Success Initiative.

In February 2008, the National association for Developmental Education (NADE) awarded Exemplary Certification to Amarillo College's developmental reading, writing and math programs. Exemplary certification is NADE's highest level of certification.

Amarillo College's developmental education mission statement, goals, and commitments follow:

### **Mission Statement**

The developmental studies program of Amarillo College is dedicated to providing a comprehensive educational program aimed at improving the quality of life for diverse populations. The Academic Development Division affords students the educational opportunities to enhance and maximize their potential by building strong foundational skills and promoting lifelong learning.

### **Goals**

- To preserve academic standards by developing competencies needed for success in mainstream college courses.
- To enhance the retention of developmental students.
- To ensure proper placement through entry-level assessments.
- To assess and improve the effectiveness of the program through continuous evaluation of the curriculum, the instruction, and the retention efforts.

## **Commitments**

- To enhance educational opportunities for developmental students.
- To provide a supportive network for developmental students through cooperation among academic departments, student support services, and administration.
- To provide academic opportunities for developmental students in the service delivery area.
- To employ state-of-the-art technologies in teaching and scholarship.
- To recruit, develop, and support outstanding faculty in the discipline of developmental education.
- To support professional development in faculty and staff.
- To promote the development and application of cognitive and affective learning theories.
- To develop basic skills, thinking skills, and personal qualities.

## **Organization**

The ACcess Division is the developmental studies division and an integral part of the institution. An organizational chart is in Appendix A.

The ACcess Division houses:

- Developmental Reading
- English-as-a-Second Language
- ACcess Learning Centers
- High School Equivalency Program (HEP)--a federally funded program that provides GED instruction and testing to students with seasonal agricultural backgrounds (migrants).

## **Coordinated Services**

Developmental math reports directly to the Math Department and developmental English reports directly to the English Department. However, the ACcess Division Chair serves as the campus liaison who coordinates the developmental reading, math and English programs. Coordinators from the Math Department, English Department and ACcess Division meet regularly to ensure that best practices for developmental education are followed.

# DEVELOPMENTAL EDUCATION INSTRUCTIONAL PROGRAMS

Amarillo College has five developmental education instructional programs: math, reading, English, ESL, and a basic academic skills learning center. All new students enrolling in Amarillo College must be advised. If the student has not demonstrated college readiness on an approved assessment, the student must see an advisor each semester until all developmental work is complete.

The following is a listing of developmental courses offered and information concerning the respective programs:

## 1. Math

**Coordinator**-Edie Carter, 371-5335, Office: ENGR 210A

COURSE NAME	CATALOG NAME	PLACEMENT LEVEL
Basic Mathematics	MATH 0301	Level 1--Student math skills are eighth-grade and below. Student has not mastered order of operations, fractions, decimals, percents, ratios and proportions, or integers.
Beginning Algebra	MATH 0302	Level 2--Student lacks most high school Algebra I skills.
Intermediate Algebra	MATH 0303	Level 3--Student lacks most high school Algebra II skills.

## 2. Reading

**Coordinator**—Judy Isbell, Coordinator, 371-5423, Office: LIB 17

COURSE NAME	CATALOG NAME	PLACEMENT LEVEL
Basic Reading Skills	RDNG 0301	Level 1--Student reading skills are at grade levels 4 – 6.
Reading Techniques I	RDNG 0321	Level 2--Student reading skills are at grade levels 7 – 9.
Reading Techniques II	RDNG 0331	Level 3--Student reading skills are at grade levels 10 - 12.

### 3. Basic Academic Skills

Coordinator--Judy Johnson--371-5429, Office: LIB 305

COURSE NAME	CATALOG NAME	PLACEMENT LEVEL
Basic Academic Skills	BASM 0302/0202/0101 BASR 0302/0202/0101 BASW 0302/0202/0101	For students scoring below 230 in math or reading or below 200 in writing on THEA. For students scoring below 78 on reading, below 63 on math, or below 80 on writing on Accuplacer. Students must meet an attendance requirement.
Basic Academic Skills	BAS 0303 BAS 0203 BAS 0103	For students wanting to build basic skills in math, writing, and/or reading. Students must meet an attendance requirement.

### 4. English

Coordinator-Dr. Judy L. Carter--371-5181, Office: ORD 203B

COURSE NAME	CATALOG NAME	PLACEMENT LEVEL
Basic Grammar and Writing I	ENGL 0301	<p>Student does not demonstrate basic use of punctuation and capitalization; of nouns, adjectives, and adverbs; and of verb forms and tenses. Errors exist with subject-verb agreement, sentence fragments, run-on sentences, spelling, diction, and syntax.</p> <p>Student does not compose a clear, logically developed paragraph. Student is unable to include a clear topic sentence, concrete supporting details, or an appropriate conclusion in the paragraph. Transitions are illogical or absent.</p>
Basic Grammar and Writing II	ENGL 0302	<p>Student does not demonstrate conventional use of various types of phrases, clauses, and sentence patterns. Some errors exist in capitalization, punctuation, pronoun usage, spelling, diction, and syntax.</p> <p>Student does not compose a coherent, multi-paragraphed essay. Student is unable to include a focused thesis, topic sentences, transitions, logically and concretely developed paragraphs, supporting details, or an appropriate introduction and conclusion.</p>

## 5. English-as-a-Second Language (ESL)

**Coordinator**—Carol Summers--371-5416, Office: LIB 305G

**ESL Lab Supervisor**- 371-5908, Office: LIB 300C

Direct students to meet with Carol Summers or ESL Lab Supervisor for proper placement.

COURSE NAME*	CATALOG NAME	PLACEMENT LEVEL
Level I	ESL 0311 Speaking & Listening I ESL 0312 Grammatical Structure I ESL 0314 Reading I ESL 0315 Composition I	Student cannot write any English or a few English words that do not convey a thought.
Level II	ESL 0321 Speaking & Listening II ESL 0322 Grammatical Structure II ESL 0324 Reading II ESL 0325 Composition II	Student can write words in English that convey a thought.
Level III	ESL 0331 Speaking & Listening III ESL 0332 Grammatical Structure III ESL 0334 Reading III ESL 0335 Composition III	Student can write sentences in English on a topic.
Level IV	ESL 0341 Speaking & Listening IV ESL 0344 Reading IV ESL 0345 Grammar & Composition IV	Student can write a paragraph in English, but it may contain development and grammatical errors.

- a. Students whose native language is not English should complete the ESL Accuplacer placement exam. An exception may be made, however, for students with extremely limited English skills. Such students are not required to take the exam; they are placed in Level I ESL classes. All other students should take the ESL Accuplacer Placement Exam. Following this assessment of their English skills, these students will be placed in the appropriate level of classes. During the first two weeks of class, ESL instructors will continue to assess the abilities of new ESL students. After this period, instructors may meet with the ESL Coordinator to recommend any placement level change deemed appropriate.
- b. English-as-a-Second Language (ESL) hours may be used for developmental education purposes when a student is placed in such courses as a result of failing the reading or writing portion of the required assessment test. However, when used for such purposes, ESL hours shall be counted toward the 27 hour cap.
- c. Upon completion of ESL coursework, the student will be required to follow the same testing and placement (TSI) requirements of all college students.
- d. A Basic Academic Skills Lab is co-requisite for all students enrolled in an ESL class. For any number of ESL classes the student takes, the co-requisite is BAS-0103, BAS-0203, or BAS-0303.



# APPLICATION OF TESTING REQUIREMENTS

## Testing Requirements

1. Each student, unless otherwise exempt, who enters Amarillo College to complete a Level-Two certificate (43-59 semester credit hours) or an Associate degree must be assessed in reading, writing, and mathematics skills prior to enrolling in any college-level coursework.

Students enrolling in a Level-One (42 or fewer semester hours) certificate program must adhere to the pre-requisite and co-requisite requirements dictated by each program before enrolling. See Appendix C, Testing Requirements for Certificate Programs.

2. High school students are subject to the following guidelines:
  - a. A high school student who enrolls in dual credit courses or is concurrently enrolled in both high school and college courses must take a required assessment prior to enrolling in college-level coursework.
  - b. The appropriate section of the test for the dual credit course being taken is provided in Appendix B.
  - c. High school students who enroll in Level-One certificates must have passed all sections of the exit-level TAKS test and take the appropriate Amarillo College test(s) for placement. See Appendix C.
  - d. A high school student who fails to achieve the minimum passing standard may not take college-level classes related to portions of the test that have not been passed. The student can not be required to take developmental classes while in high school.
3. Students who are blind must take a required assessment. Appropriate accommodations are available.
4. Students who are deaf and have taken the Stanford Achievement Test may elect to use those scores or may take another approved test.  
*Students who are blind and/or deaf should be encouraged to see the disAbility Coordinator for more information.*

## Testing Exemptions and Exceptions

Students in any of the following categories or conditions are exempt from testing:

1. Earned within the last five years a composite score of 23 or higher on the ACT test, with individual English and/or Math scores of at least 19. *A student can be exempt in math OR English as long as he/she scores a 19 on either part AND has the composite score of 23.*
2. Earned within the last five years a composite score of 1070 or higher on the SAT test, with individual Verbal and/or Math scores of at least 500. *A student can be exempt in math OR English as long as he/she scores a 500 on either part AND has the composite score of 1070.*
3. Earned within the last three years the following minimum scores on the TAKS (exit-level) test: 2200 in math and/or 2200 in English/Language Arts (ELA) with a writing subscore of at least 3.
  - If a student meets all three areas, he/she is exempt from Texas Success Initiative (TSI) testing requirements.
  - If a student has the 2200 in math but not the language arts requirement, then he/she is TSI complete in math but must test in reading and writing.
  - If a student has the 2200 in Language Arts and the 3+ on the essay but has not met the 2200 in math, then he/she is college ready in reading and writing but must test for math.
4. Possesses an Associate's or Bachelor's degree from a regionally accredited institution of higher education.
5. Transfers to Amarillo College from a regionally accredited institution of higher education or an accredited out-of-state institution of higher education and has satisfactorily completed college-level coursework in math, English and/or reading-intensive courses.
6. Enrolls in a Level-One certificate program, a program of 42 or fewer semester credit hours. **NOTE: Students enrolling in a Level-One certificate program must contact the Assessment Center or the Program Advisor for required testing and remediation information.** See Appendix C.

7. Non-degree seeking students:

- must not be seeking a degree or certificate;
- must meet all Amarillo College admission requirements;
- on application must declare “Educational Goal” to be other than Associate Degree or Certificate of Completion;
- cannot receive federal financial aid;
- must meet all course prerequisites.

# CRITERIA FOR MEETING ASSESSMENT REQUIREMENTS

There are three ways to demonstrate college readiness. The student must demonstrate college readiness on the Texas Higher Education Assessment (THEA), Accuplacer or other approved test, complete the sequence of remediation, or be exempt from testing. The following section provides details important for advising.

1. A student who initially fails to demonstrate college readiness on one or more sections of the required assessment may satisfy college readiness standards in one of two ways:
  - a. Achieve a score showing college readiness when retesting or
  - b. Complete the remediation sequence.
2. Minimum Passing Standards for testing:

TEST	READING SCORE	MATH SCORE	College Level Math Scores	ESSAY SCORE	WRITING SCORE
<b>THEA/TASP</b>	230	230	270	Included in Writing Score	220
<b>MAPS (no longer available)</b>	114	613	619	6	310
<b>ACCUPLACER</b>	78	63	75	6	80
<b>ASSET</b>	41	38	47	6	40
<b>COMPASS</b>	81	39	46	6	59

- a. The passing standard for the written essay portion of all alternative tests is a score of 6. However, an essay with a score of 5 will pass if the student meets the objective writing test standard. See Appendix D for objective scores.

- b. Even though 230 is a passing score for THEA/TASP math, students may not take transfer level math courses unless they achieve a 270 or higher on the test.
  - c. Amarillo College administers THEA and Accuplacer as the institution's required testing instruments.
3. Developmental placement standards:
  - a. See "Amarillo College Placement Testing" in Appendix D for proper developmental course placement.
  - b. The ACcess Learning Center's Basic Academic Skills (BASM, BASR, BASW) courses may be used in place of a structured developmental reading, writing, or math course to satisfy remediation requirements. However, one semester of BAS is not necessarily equal to one semester of structured coursework.
    - Completion of a Basic Academic Skills course offered through the Learning Center will not count as completion of the required remedial sequence or satisfy course prerequisites.
    - A student who remediates by enrolling in Basic Academic Skills classes offered through the Learning Center (BASM, BASR, BASW) must demonstrate competency by scoring at the appropriate level on the THEA or Accuplacer.
4. Once a student has passed any section of any of the required tests his or her score shall remain permanently effective.
5. The student's official transcript indicates how a student has met college readiness standards.

# CRITICAL INFORMATION FOR ACADEMIC ADVISING

Amarillo College maintains an advising program to assist students regarding coursework and other means by which students can develop the academic skills required to complete college-level work successfully. Students are advised by their major advisor or the divisional advisor as required by the division.

The Amarillo College advising plan ensures academic success by:

- providing an individual plan for each student to succeed in performing freshman-level academic coursework.
- requiring appropriate developmental education necessary to ensure college readiness.
- providing measures to determine college readiness.

The following section provides miscellaneous information critical for advising.

1. A student who fails to show college readiness in a tested skill area must meet the requirements for remediation based on the student's test scores. See Appendix D.
2. When students are concurrently enrolled in Amarillo College and another Texas institution of higher education, the institution where the student first registers and pays full tuition takes precedence for the provision of developmental education. Students will not be required to be enrolled in remediation at both institutions.
3. No student may graduate from a Level-Two certificate program (43-59 semester credit hours) or an Associate Degree program until the student proves college readiness by achieving a passing score on a state approved assessment, completing the remediation sequence, or being exempted from testing.
4. A student in need of remediation must be enrolled in at least one developmental course until all remediation is complete.
5. Completion of an appropriate developmental program includes, but is not limited to:
  - a. Making a grade of "C" or higher in Reading Techniques II for the reading section.
  - b. Making a grade of "C" or higher in Grammar and Writing II for the writing section.
  - c. Making a grade of "C" or higher in Beginning Algebra for the math section.

- d. If a student remediates in the ACcess Learning Center (BASR, BASM, or BASW), the student must demonstrate competency by scoring at the appropriate level on THEA or Accuplacer.
6. Even though students completing Beginning Algebra may retest and score college level, the Math and Engineering Department recommends that students complete Intermediate Algebra before enrolling in College Algebra.
7. A student wishing to enroll in College Algebra who passes the math section of THEA/TASP with a 230-269 or Accuplacer with a 63-74 may challenge his/her score by taking the Amarillo College Math Placement Test. Scoring 23 or higher on the math section of the placement test will allow the student to enroll in College Algebra. The Mathematics and Engineering Department Chair, the Sciences and Engineering Division Chair, or their designee may make exceptions.
8. Remediation will be required of students enrolled in Level-One certificates who do not meet the minimum testing scores required for that program. See Appendix C.
9. It is preferable for a student who has passed math with a 230-269 and not passed at least one other section of the assessment instrument to enroll in the section not passed. For students working on math, Beginning Algebra (MATH 0302) completes math remediation. Intermediate Algebra (MATH 0303) may serve as remediation in the circumstance that a student who has just completed MATH 0302 wishes to continue in math by taking MATH 0303 rather than reading or writing remediation.

The Director of Advising and Counseling or the ACcess Division Chair must approve exceptions.

10. The following guidelines apply to a student who changes his/her major.
  - a. If a student officially changes his major before the census date of the semester/term of enrollment, the change will be effective for that semester/term.
  - b. If the change occurs after the census date, it will be effective for the next term the student enrolls.
  - c. Change of major during a term or semester will not alter testing and remediation requirements imposed at the beginning of the semester.

11. Education majors should contact their transfer university to determine testing obligations for teacher certification.
12. ACT and SAT scores older than five years do not satisfy requirements of the developmental education plan.
13. Amarillo College does not receive funding for developmental courses taken by a student in excess of 27 semester credit hours or the equivalent. Developmental hours funded by the state during the summer of 1996 and thereafter shall be counted toward each student's total number of developmental hours.
14. History: Passing scores for TASP were 220 for Reading, 220 for Writing, and 220 for Math from 1989 to August 1995. Passing Reading and Math scores were increased to 230 in September 1995. Texas Success Initiative began Fall, 2003.

## PROGRAM EVALUATION

The program is evaluated regularly and the program review policy requires each component of the institution to undergo a thorough evaluation every five years. The ACcess Division completed its program review 2003-2004. The next institutional program review is scheduled for 2009-2010.

Also, the program is evaluated as part of THECB Institutional Effectiveness Peer Review each five years. The last review was conducted in Spring, 1999. That evaluation resulted in an exemplary rating for Amarillo College's developmental education program.

The results of specific elements of the program are reported to THECB on a semester and annual basis. This process results in an evaluation report back to the institution through the annual data profile request. The same data then becomes a part of routine internal analysis and evaluation.

The institutional strategic plan sets out institutional objectives and performance measures used to determine the success in meeting these objectives. The developmental education program is a crucial element in meeting many of these objectives.

Data is analyzed annually to determine if the pre-set measures of success have been met; action plans are then implemented as necessary.



# ACCOUNTABILITY

Amarillo College adheres to the Texas Success Initiative program rules and regulations. The college is accountable to the State of Texas for accurate compliance and maintenance of accurate records. Periodically the State conducts audits of college operations including student records.

If an audit reveals a lack of compliance with Texas Success Initiative rules and regulations, the College could be required to forfeit funding.

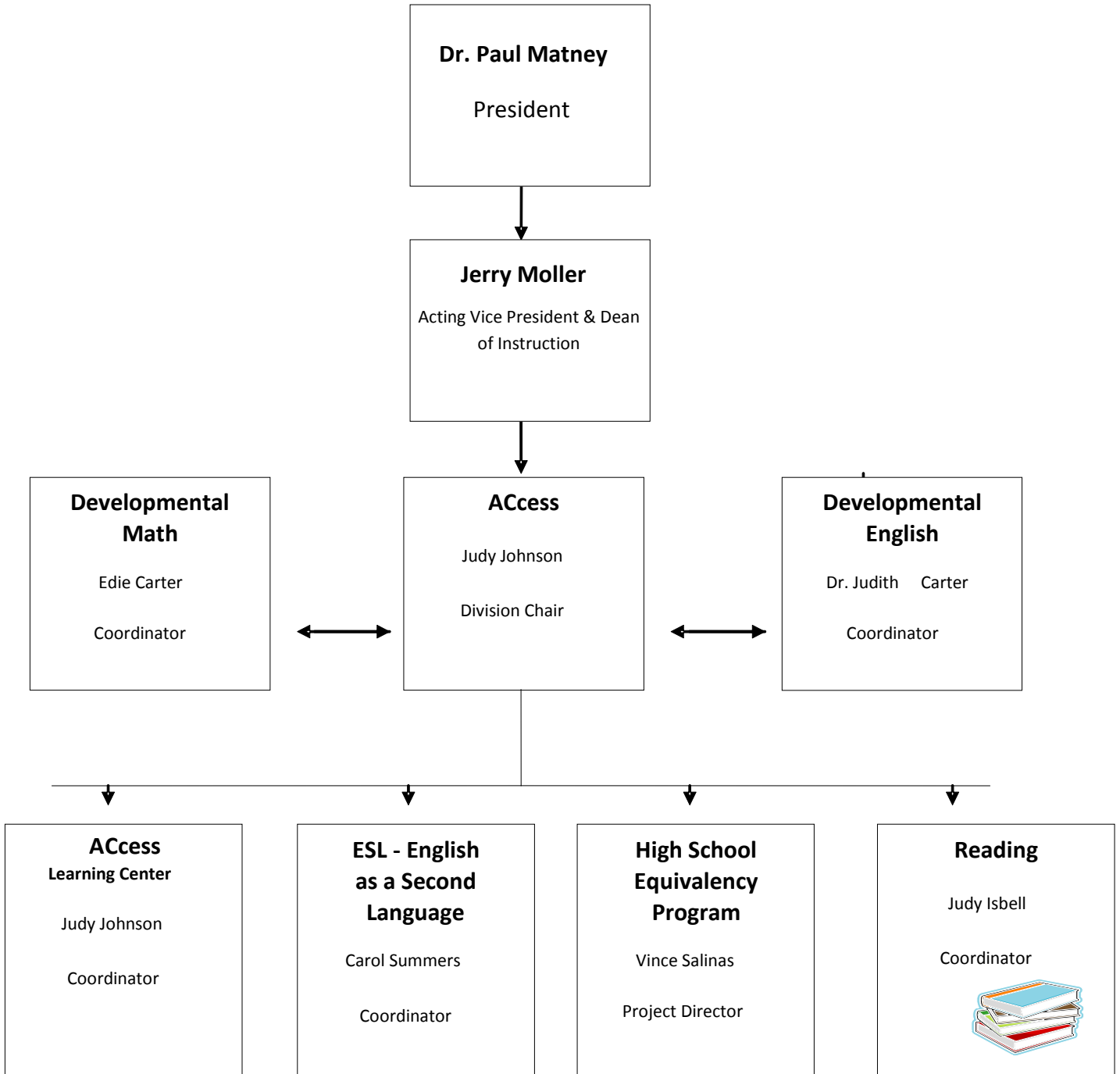
The audit assesses the College's compliance with the rules and regulations through the analysis of samples of student records and the reports routinely submitted to THECB. These reports depict the following:

- the testing performance of students
- their enrollment in required remediation

The objective of this institutional developmental education plan is to provide each student with opportunities for educational success and to ensure that Amarillo College is in full compliance with all THECB rules and regulations.

# Appendix A

## ORGANIZATIONAL CHART



# Amarillo College

## Developmental Education



# **Appendix B**

## **DUAL CREDIT TESTING REQUIREMENTS**

### Dual Credit Testing Assessments

The Texas Success Initiative of the Texas Higher Education Coordinating Board requires that all students entering a public college or university be tested or be exempt from testing. Dual Credit students must only test or be exempt from testing in areas relevant to the courses to be attempted. Exemptions are based upon the following tests:

TEST EXEMPTIONS	REQUIRED SCORES
TAKS	English Language Arts (ELS): 2200 scale score with at Written composition subscore of 3 Mathematics: 2200 scale score *
ACT	English 19 with a composite score of 23 Math 19 with a composite score of 23
SAT	Critical Reading 500 with a composite score of 1070 Math 500 with a composite score of 1070
PSAT/NMSQT	<b>For students entering 11<sup>th</sup> grade only:</b> Critical Reading 50 plus a combined score of 107 Mathematics 50 plus a combined score of 107 <b>(Students entering 12<sup>th</sup> grade must show new exemption based on TAKS, SAT, or ACT.)</b>

\*A student who is exempt from testing based on Math TAKS or PSAT scores must either take the AC Math Placement test **or** have completed a sequence of Math courses including Algebra I, Algebra II, and Geometry. And, the student must have maintained an overall B average in each course listed.

If a student is not exempt from testing, the Accuplacer or THEA test must be taken prior to registration. For information on each test, see the Amarillo College Website, Testing Services. To schedule testing contact your school counselor or the Amarillo College Assessment Center, 806-371-5445.

STATE APPROVED TESTS	REQUIRED SCORES
Accuplacer	Reading 78 or higher Writing 6-8 or a 5 with an objective score of 80 or higher Math 75 or higher
THEA	Reading 230 or higher Writing 220 or higher Math 270 or higher

The table below shows which test is required for each course:

SECTION OF TEST REQUIRED	COURSE
Reading	Biology, Child Development, Computer courses, Economics, Foreign Languages, Government of the U.S., History of the U.S., Humanities, Life Science, Psychology, Music Appreciation, Physical Education
Reading and Writing	English
Writing	Speech
Math	College Algebra, Trigonometry, Calculus, Physics, Analytic Geometry
Math and Reading	Chemistry
Pass All sections of TAKS or Accuplacer reading of 61	Automotive Technology (Non-transferable certificate program)
Pass All sections of TAKS or Accuplacer reading of 78	Networking, Cisco (Non-transferable certificate programs)

**Appendix C**  
**REQUIREMENTS**  
**FOR**  
**CERTIFICATE**  
**PROGRAMS**

**Amarillo College Assessment Requirements for Certificate Programs**  
**2009 - 2010**  
 (Revised 08/09)

**This chart assumes the minimum assessment requirements for each certificate. If students have completed assessment beyond the minimum, they will not be required to retest on a different measure to satisfy departmental specifications.**

**Table 1 - The following certificates require a READING ASSESSMENT ONLY.**

<b>MAJOR CODE</b>	<b>CERTIFICATE NAME</b>	<b>PROGRAM ADVISOR</b>	<b>TEST REQUIRED</b>	<b>SCORE REQUIRED</b>
	<b>CHILD DEVELOPMENT/ EARLY CHILDHOOD</b>	<b>Mary Clare Munger 356-3688</b>		
CDEC.CERT.ADMIN	CDEC Administrator	<i>For Child Development/ Early Childhood programs developmental work is co-requisite</i>	THEA or ACCUPLACER	<b>ACCUPLACER</b> - Reading 61+ <b>THEA</b> - Reading 201+
CDEC.CERT.PRVD	CDEC Provider			
CDEC.CERT.PARA	CDEC Paraprofessional			
	<b>INSTRUMENT AND CONTROL TECHNOLOGY</b>	<b>Jack Stanley 371-5091</b>		
INTC.CERT.EICT	Electronic Instrument and Control Technician	<i>For Instrument and Control Technology programs developmental work is co-requisite</i>	ACCUPLACER	<b>ACCUPLACER</b> - Reading 78+
CETT.CERT.TEL	Telecommunications Specialist			
INTC.CERT.CATH	Cathodic Protection Technician			
INTC.CERT.PT	Process Technology Specialist			
	<b>INTERIOR DESIGN</b>	<b>Ann Fry 354-6051</b>		
INDS.CERT	Certificate of Completion	<i>Developmental work is pre-requisite.</i>	ACCUPLACER	<b>ACCUPLACER</b> - Reading 61+
	<b>OFFICE TECHNOLOGY</b>	<b>Gay Mills 371-5099</b>		
OFAD.CERT	Office Technology Certificate of Completion	<i>Developmental work is co-requisite</i>	ACCUPLACER	<b>ACCUPLACER</b> - Reading 78+
	<b>SURGICAL TECHNOLOGY</b>	<b>Lisa Holdaway 356-3663</b>		
SRGT.CERT	Surgical Technology Certificate	<i>Developmental work is pre-requisite</i>	ACCUPLACER	<b>ACCUPLACER</b> - Reading 78+

**Table 2** – The following certificates have testing requirements in **addition** to Reading.

MAJOR CODE	CERTIFICATE NAME	PROGRAM ADVISOR	TEST REQUIRED	SCORE REQUIRED
<b>AUTOMOTIVE COLLISION TECHNOLOGY</b>				
ABDR.CERT.ABRT	Auto Body Collision Technology	<b>Henry Wyckoff 355-4209</b>  <i>For all Automotive Collision Technology programs, developmental work is pre-requisite or co-requisite, depending on scores.</i>	ACCUPLACER	<p><b>Scores indicating that developmental coursework is Prerequisite - Accuplacer</b></p> <p>Math &lt;41 Reading &lt;49 Writing &lt;4 Essay</p> <p><b>Scores indicating that developmental coursework is Co-requisite - Accuplacer</b></p> <p>Math 41 – 74 Reading 49 - 77 Writing 4 Essay or 5 Essay w/OBJ &lt;80</p>
<b>AUTOMOTIVE TECHNOLOGY</b>				
AUMT.CERT.PTRN	Power Train	<b>Henry Wyckoff 355-4209</b>  <i>For all Automotive Technology programs, developmental work is pre-requisite or co-requisite, depending on scores.</i>	ACCUPLACER	<p><b>Scores indicating that developmental coursework is Prerequisite - Accuplacer</b></p> <p>Math &lt;41 Reading &lt;49 Writing &lt;4 Essay</p> <p><b>Scores indicating that developmental coursework is Co-requisite - Accuplacer</b></p> <p>Math 41 – 74 Reading 49 - 77 Writing 4 Essay or 5 Essay w/OBJ &lt;80</p>
AUMT.CERT.CHSS	Chassis and Body			



MAJOR CODE	CERTIFICATE NAME	PROGRAM ADVISOR	TEST REQUIRED	SCORE REQUIRED
	<b>ART</b>	<b>Steve Cost 371-5546</b>		
ARTC.CERT.GD	Graphic Design	<i>For both Art programs developmental work is co-requisite</i>	THEA or ACCUPLACER	<b>ACCUPLACER –</b> Reading 49+ Math 41+ Writing 51+ <b>THEA -</b> Reading 170+ Math 180+ Writing 180+
	<b>AVIATION MAINTENANCE TECHNOLOGY</b>	<b>Dennis Mosley 335-4381</b> <b>Joe Gandy 335-4382</b>		
AERM.CERT.AM	Airframe Mechanic	<i>For all Aviation Maintenance Technology programs, developmental work is pre-requisite or co-requisite, depending on scores.</i>	ACCUPLACER	<u>Scores indicating that developmental coursework is Prerequisite - Accuplacer</u> Math <41 Reading <49 Writing <4 Essay  <u>Scores indicating that developmental coursework is Co-requisite - Accuplacer</u> Math 41 – 74 Reading 49 - 77 Writing 4 Essay or 5 Essay w/OBJ <80
AERM.CERT.PM	Powerplant Mechanic			
AERM.CERT.AERO	Aerospace Manufacturing			

MAJOR CODE	CERTIFICATE NAME	PROGRAM ADVISOR	TEST REQUIRED	SCORE REQUIRED
	<b>COMPUTER INFORMATION SYSTEMS</b>	<b>Duane Litner 371-5211</b>		
COSC.CERT	Computer Information Systems	<i>Developmental work is pre-requisite.</i>	THEA or ACCUPLACER	<b>ACCUPLACER –</b> Reading 78+ Math 75+ Writing 6+ Essay, or 5 Essay & 80+ Objective <b>THEA -</b> Reading 230+ Math 270+ Writing 220+
	<b>CRIMINAL JUSTICE</b>	<b>Sondra Beighle 354-6049</b>		
CJLE.CERT.LE	Criminal Justice Law Enforcement Certificate(Basic Peace Officer Academy)	<i>Developmental work is pre-requisite.</i> An applicant for the law enforcement academy must have the required scores before acceptance into the academy. If the testing scores are low in an area, the student must complete developmental courses and retest before acceptance into the academy.	THEA or ACCUPLACER (Will also accept old Placement Test scores if testing occurred before Sept. 1, 1998, Acceptable scores are Rdg.17+, Wrtg. 14+, & Math10+)	<b>ACCUPLACER –</b> Reading 78+ Math 41+ Writing 6+ Essay, or 5 Essay & 80+ Objective <b>THEA -</b> Reading 230+ Math 180+ Writing 220+
	<b>DIESEL MECHANICS TECHNOLOGY</b>	<b>Henry Wyckoff 355-4209</b>		
DEMR.CERT.DT	Diesel Technician	<i>Developmental work is pre-requisite or co-requisite, depending on scores.</i>	ACCUPLACER	<p><b><u>Scores indicating that developmental coursework is Prerequisite - Accuplacer</u></b></p> <p>Math &lt;41</p> <p>Reading &lt;49</p> <p>Writing &lt;4 Essay</p> <hr/> <p><b><u>Scores indicating that developmental coursework is Co-requisite - Accuplacer</u></b></p> <p>Math 41 – 74</p> <p>Reading 49 - 77</p> <p>Writing 4 Essay or 5 Essay w/OBJ</p> <p>&lt;80</p>

MAJOR CODE	CERTIFICATE NAME	PROGRAM ADVISOR	TEST REQUIRED	SCORE REQUIRED
	<b>DENTIST AIDE</b>	<b>Dana Scott 356-3616</b>		
DNTA.CERT	Dentist Aide Certificate	<i>Developmental work is pre-requisite</i>	THEA or ACCUPLACER	<b>ACCUPLACER –</b> Reading 78+ Math 41+ Writing 4+ Essay & 51+ Objective <b>THEA -</b> Reading 230+ Math 180+ Writing 180+
	<b>DRAFTING</b>	<b>Tony Thomas 354-6035</b>		
DFTG.CERT.DT	Drafting Technician	<i>For both Drafting programs developmental work is pre-requisite</i>	ACCUPLACER	<b>ACCUPLACER –</b> Reading 78+ Math 63+ Writing 6+ Essay, or 5 Essay & 80+ Objective
DFTG.CERT.CAD	AutoCAD Specialist			
	<b>ELECTRONIC SYSTEMS TECHNOLOGY</b>	<b>Jack Stanley 371-5091</b>		
CETT.CERT.GEN	General Electronics Systems Assistant	<i>For Electronic Systems Technology programs, developmental work is co-requisite.</i>	ACCUPLACER <b>*For all Electronic Systems Technology programs: If a student needs remediation in both math and reading, math remediation should be done first.</b>	<b>ACCUPLACER –</b> Reading 78+ Math 48+
CETT.CERT.MICR	Microcomputer Service Specialist			
EECT.CERT.EAS	Electronic Application Specialist			
CETT.CERT.NET	Networking Technology Option			
CETT.CERT.RBTC	Robotics Technology Option			

MAJOR CODE	CERTIFICATE NAME	PROGRAM ADVISOR	TEST REQUIRED	SCORE REQUIRED
	<b>EMERGENCY MEDICAL SERVICES PROFESSIONS</b>	<b>Paul Whitfield 354-6077</b>		
EMSP.CERT	Emergency Medical Services Professions Certificate	<i>Developmental work is pre-requisite</i>	THEA or ACCUPLACER <b>THIS CERTIFICATE IS NOT TSI WAIVED.</b>	<b>ACCUPLACER –</b> Reading 78+ Math 63+ Writing 6+ Essay, or 5 Essay & 80+ Objective <b>THEA -</b> Reading 230+ Math 230+ Writing 220+
	<b>FIRE PROTECTION</b>	<b>Ed Nolte 335-4277</b>		
FIRS.CERT	Basic Firefighter (Fire Academy)	<i>Developmental work is pre-requisite or co-requisite, depending on scores.</i>	ACCUPLACER	<b>Scores indicating that developmental coursework is Prerequisite - Accuplacer</b> Math <41 Reading <49 Writing <4 Essay  <b>Scores indicating that developmental coursework is Co-requisite - Accuplacer</b> Math 41 – 74 Reading 49 - 77 Writing 4 Essay or 5 Essay w/OBJ <80
	<b>INDUSTRIAL MAINTENANCE TECHNOLOGY</b>	<b>Kim Hays 335-4366</b>		
IMRT.CERT.IMC	Industrial Maintenance Certificate	<i>For all Industrial Maintenance Technology programs: *Math &lt;41, Reading&lt;49, Writing &lt;4 Essay—Developmental work is pre-req. *Math 41-74, Reading 49-77, Writing 4 Essay or 5 Essay w/OBJ&lt;80—Developmental work is co-req.</i>	ACCUPLACER	<b>Scores indicating that developmental coursework is Prerequisite - Accuplacer</b> Math <41 Reading <49 Writing <4 Essay  <b>Scores indicating that developmental coursework is Co-requisite - Accuplacer</b> Math 41 – 74 Reading 49 - 77 Writing 4 Essay or 5 Essay w/OBJ <80
IMRT.CERT.ELMT	Electromechanical Certificate			
IMRT.CERT.HART	Heating, Air Conditioning, & Refrigeration Certificate			

MAJOR CODE	CERTIFICATE NAME	PROGRAM ADVISOR	TEST REQUIRED	SCORE REQUIRED
	<b>MEDICAL DATA SPECIALIST</b>	<b>Judy Massie 354-6068</b>		
MDSP.CERT	Medical Data Specialist	<i>Developmental work is pre-requisite</i>	ACCUPLACER	<b>ACCUPLACER –</b> Reading 78+ Writing 6+ Essay or 5 Essay & 80+ Objective
	<b>MORTUARY SCIENCE</b>	<b>Lisa Meehan 356-3675</b>		
MRTS.CERT	Mortuary Science Certificate	<i>Developmental work is co-requisite</i>	THEA or ACCUPLACER	<b>ACCUPLACER –</b> Reading 78+ Writing 6+ Essay or 5 Essay & 80+ Objective Math 41+ <b>THEA -</b> Reading 230+ Math 180+ Writing 220+
	<b>NONDESTRUCTIVE TESTING &amp; EVALUATION</b>	<b>Kim Hays 335-4366</b>		
NDTE.CERT	Nondestructive Testing Technician	<i>For all Nondestructive Testing &amp; Evaluation programs: *Math &lt;41, Reading&lt;49, Writing &lt;4 Essay—Developmental work is pre-req.  **Math 41-74, Reading 49-77, Writing 4 Essay or 5 Essay w/OBJ&lt;80—Developmental work is co-req.</i>	ACCUPLACER	<b><u>Scores indicating that developmental coursework is Prerequisite - Accuplacer</u></b> Math <41 Reading <49 Writing <4 Essay  <b><u>Scores indicating that developmental coursework is Co-requisite - Accuplacer</u></b> Math 41 – 74 Reading 49-77 Writing 4 Essay or 5 Essay w/OBJ <80
NDTE.CERT.ST	Service Testing Technician			
NDTE.CERT.VT	Volumetric Testing Technician			

MAJOR CODE	CERTIFICATE NAME	PROGRAM ADVISOR	TEST REQUIRED	SCORE REQUIRED
	<b>NURSING</b>	<b>LaVon Barrett 354-6016</b>		
VNSG.CERT	Vocational Nursing	For reading remediation students should follow developmental reading remediation sequence. <b>Students scoring below the required math score MUST remediate for math by enrolling in BAS 0203 through the AAccess Learning Center – “nursing math” program.</b>	THEA or ACCUPLACER	<b>ACCUPLACER –</b> Reading 78+ Math 39+ <b>THEA -</b> Reading 230+ Math 178+
	<b>OFFICE ADMINISTRATION</b>	<b>Gay Mills 371-5099</b>		
OFAD.CERT.PRO	Office Administration Professional Certificate	<i>Developmental work is pre-requisite</i>	THEA or ACCUPLACER <b>THIS CERTIFICATE IS NOT TSI WAIVED.</b>	<b>ACCUPLACER –</b> Reading 78+ Math 63+ Writing 6+ Essay, or 5 Essay & 80+ Objective <b>THEA -</b> Reading 230+ Math 230+ Writing 220+
	<b>PHARMACY TECHNOLOGY</b>	<b>Shawna Lopez 356-3663</b>		
PHRA.CERT	Pharmacy Technology Certificate	<i>Developmental work is pre-requisite</i>	THEA or ACCUPLACER	<b>ACCUPLACER –</b> Reading 78+ Math 41+ <b>THEA -</b> Reading 230+ Math 180+
	<b>PHOTOGRAPHY</b>	<b>Victoria Taylor-Gore 371-5982</b>		
PHTC.CERT	Photography Certificate	<i>Developmental work is co-requisite</i>	THEA or ACCUPLACER	<b>ACCUPLACER –</b> Reading 49+ Math 41+ Writing 51+ <b>THEA -</b> Reading 170+ Math 180+ Writing 180+

MAJOR CODE	CERTIFICATE NAME	PROGRAM ADVISOR	TEST REQUIRED	SCORE REQUIRED
	<b>RADIO - TELEVISION</b>	<b>Don Abel 371-5298</b>		
RTVB.CERT	Radio - Television Certificate	<i>For both Radio – Television programs developmental work is co-requisite</i>	THEA or ACCUPLACER	<b>ACCUPLACER –</b> Reading 61+ Writing 6+ Essay, or 5 Essay & 80+ Objective <b>THEA -</b> Reading 201+ Writing 220+
RTVB.CERT.BASIC	Broadcast Sales and Marketing Basic Certificate			
	<b>SAFETY &amp; ENVIRONMENTAL TECHNOLOGY</b>	<b>Sandra Jefferson 335-4230</b>		
EPCT.CERT	Environmental Health Technology Certificate	<i>For both Environmental Health Technology programs, developmental work is pre-requisite or co-requisite, depending on scores.</i>	ACCUPLACER	<p>-</p> <p><u>Scores indicating that developmental coursework is Prerequisite - Accuplacer</u></p> <p>Math &lt;41            Reading &lt;49            Writing &lt;4 Essay</p> <p><u>Scores indicating that developmental coursework is Co-requisite - Accuplacer</u></p> <p>Math 41 – 74            Reading 49 - 77            Writing 4-5 Essay w/OBJ            &lt;80</p>
EPCT.CERT.CHEM	Environmental Chemical Technology Certificate of Completion	<i>For both Environmental Health Technology programs development work is co-requisite.</i>	THEA Or ACCUPLACER	<b>ACCUPLACER-</b> Reading 78+ Math 63+ Writing 6+ Essay, or 5 Essay & 80+ Objective <b>THEA –</b> Reading 230+ Math 230+ Writing 220+

MAJOR CODE	CERTIFICATE NAME	PROGRAM ADVISOR	TEST REQUIRED	SCORE REQUIRED
DAAC.CERT	Substance Abuse Counseling	<i>Developmental work is pre-requisite</i>	ACCUPLACER	<b>ACCUPLACER –</b> Reading 78+ Writing 6+ Essay, or 5 Essay & 80+ Objective
	<b>WELDING TECHNOLOGY</b>	<b>Jay Anders 335-4398</b>		
WELD.CERT.BAS  WLDG.CERT.ADV	Basic Welding Technology Certificate <b>or</b> Advanced Welding Certificate	<i>For all Welding programs, developmental work is pre-requisite or co-requisite, depending on scores.</i>	ACCUPLACER	<p><b><u>Scores indicating that developmental coursework is Prerequisite - Accuplacer</u></b></p> <p>Math &lt;41 Reading &lt;49 Writing &lt;4 Essay</p> <p><b><u>Scores indicating that developmental coursework is Co-requisite - Accuplacer</u></b></p> <p>Math 41 – 74 Reading 49 - 77 Writing 4-5 Essay w/OBJ &lt;80</p>



**Table 3** – The following certificates require **PROGRAM – SPECIFIC TESTING**, or are special populations, and require **NO TESTING**.

MAJOR CODE	CERTIFICATE NAME	PROGRAM ADVISOR	TEST REQUIRED	SCORE REQUIRED
	<b>CHILD DEVELOPMENT/ EARLY CHILDHOOD</b>	<b>Mary Clare Munger 356-3688</b>		
CDEC.SHCT.CDA	Child Development Credential		No Testing Required	
	<b>CRIMINAL JUSTICE</b>	<b>Toni Gray 354-6083</b>		
CJLE.CERT.COR	Criminal Justice Corrections Certificate		TDCJ Institutional Division pre-employment exam. <i>No exam required for licensed Texas Peace Officers who have attended a basic law enforcement academy and passed the mandated state TCLEOSE exam.</i>	
	<b>INTERIOR DESIGN</b>	<b>Ann Fry 354-6051</b>		
INDS.CERT.PRO	Interior Design Professional Certificate		No Testing Required. <i>This certificate is open only to graduates of the Associate Degree Program.</i>	
	<b>MANAGEMENT - BUSINESS MANAGEMENT</b>	<b>Anne Nail 371-5265</b>		
BMGT.SHCT.CNVS	Convenience Store Management Short- Term Certificate	<b><i>For all Management programs:</i></b>  <i>The program manager may require students to participate in developmental courses and/or the ACcess Learning Center if basic skill improvement is needed.</i>	<b><i>For all Management Programs:</i></b>  <b><i>Placement testing is not required.</i></b>	Placement testing is not required.
BMGT.SHCT.MGMT	Management Short - Term Certificate			
BMGT.CERT	General Business Management			
BMGT.CERT.CSM	Convenience Store Management Certificate			
BMGT.SHCT.SBM	Small Business Management Short Term			

MAJOR CODE	CERTIFICATE NAME	PROGRAM ADVISOR	TEST REQUIRED	SCORE REQUIRED
	<b>REAL ESTATE</b>	<b>Beverly Vinson 371-5262</b>		
RELE.CERT	Real Estate Certificate (Broker)	<p><b>For All Real Estate Programs:</b></p> <p><i>If the minimum score is not achieved, appropriate placement in a developmental class or Learning Center hours will be required.</i></p> <p><i>*Additional testing may be required dependent upon coursework. See</i></p> <p><b>Program Advisor for information.</b></p>	<p><b>For Salesperson Certificate Programs:</b></p> <p><i>Old Math Placement test administered by instructors at beginning of Real Estate Principles classes.</i></p> <p><b>For Real Estate Mortgage Lending Program:</b></p> <p><i>Old Math Placement test administered by instructors at beginning of Mortgage Lending classes.</i></p>	<p><b>For all Real Estate Programs:</b></p> <p>Math Pt - 6+</p>
RELE.CERT.SAL	Real Estate Salesperson			
RELE.CERT.MOR	Real Estate Mortgage Lending			
	<b>TRAVEL AND TOURISM</b>	<b>Catheryne Lankford 371-5263</b>		
TRVM.SHCT.HOSP	Hospitality Short-Term Certificate	<p><b>For all Travel and Tourism Programs:</b> <i>The program manager may require students to participate in developmental courses and/or the ACcess Learning Center if basic skill improvement is needed.</i></p>	<p><b>For all Travel and Tourism Programs:</b></p> <p>Placement testing is not required.</p>	<p><b>For all Travel and Tourism Programs:</b></p> <p>Placement testing is not required.</p>
TRVM.CERT	Travel and Tourism Certificate			

# Appendix D

## SCORE COMPARISON SHEET

## AMARILLO COLLEGE PLACEMENT TESTING

MATH						
MATH TESTS	THEAM or TASPM	ACCUPLACER ACCUM	TAKS MATH TAKSM11	SAT	ACT	AC Placement ACPLM
Needs Basic Math (Math 0301)	100 – 179	0 – 40	<2200 Needs Testing	<500 Math or <1070 Composite Needs Testing	<19 Math or <23 Composite Needs Testing	0-8
Needs Beginning Algebra (Math 0302)	180 – 229	41 – 62	<2200 Needs Testing	<500 Math or <1070 Composite Needs Testing	<19 Math or <23 Composite Needs Testing	9-16
Needs Intermediate Algebra (Math 0303) <i>* See footnote at the bottom of the page.</i>	230 – 269	63 – 74	<2200 Needs Testing	<500 Math or <1070 Composite Needs Testing	<19 Math or <23 Composite Needs Testing	N/A
Ready for Math 1314, Math 1332, or Math 1324	270 +	75 +	2200 +	500+ Math AND 1070+ Composite	19+ Math AND 23+ Composite	23 (if also TSI complete)
READING						
READING TESTS	THEAR or TASP R	ACCUPLACER ACCUR	TAKS English/Language Arts TAKSER11	SAT	ACT	AC Placement ACPLR
Needs Basic Reading (RDNG 0301)	100 – 169	0 – 48	<2200 Needs Testing	<500 Critical Reading (Verbal) or <1070 Composite Needs Testing	<19 English or <23 Composite Needs Testing	N/A
Needs Reading Techniques I (RDNG 0321)	170 – 200	49 – 60	<2200 Needs Testing	<500 Critical Reading (Verbal) or <1070 Composite Needs Testing	<19 English or <23 Composite Needs Testing	N/A
Needs Reading Techniques II (RDNG 0331)	201 – 229	61 – 77	<2200 Needs Testing	<500 Critical Reading (Verbal) or <1070 Composite Needs Testing	<19 English or <23 Composite Needs Testing	N/A
Ready for Courses requiring College Level Reading	230 +	78 +	2200+ and 3+ on essay	500+ Critical Reading (Verbal) and 1070+ Composite	19+ English and 23+ Composite	N/A
<b>DREA 99 or DREARDNG:</b> Equivalent of TSI Complete in <b>READING</b> only. Satisfies pre-requisite for courses requiring college-level reading.						
ENGLISH						
WRITING TESTS	THEAW or TASP W	ACCUPLACER ACCUE/ACCUO	TAKS TAKSER11	SAT	ACT	AC Placement ACPL E/ACPL O
Needs Basic Grammar/ Writing I ( ENGL 0301)	100 – 180	2 or 3 on ACCUE (essay)	<2200 Needs Testing	<500 Critical Reading (Verbal) or <1070 Composite Needs Testing	<19 English or <23 Composite Needs Testing	N/A
Needs Basic Grammar/ Writing II (ENGL 0302) <i>Student must have minimum scores in BOTH Reading and Writing.</i>	181 – 219 ----- AND THEAR or TASP R (Reading) 170 +	ACCUE 4 or ACCUE 5 with ACCUO <80 ----- AND ACCU R (Reading) 49 +	<2200 Needs Testing	<500 Critical Reading (Verbal) or <1070 Composite Needs Testing	<19 English or <23 Composite Needs Testing	N/A
Ready for Freshman Composition (ENGL 1301) <i>Student must have minimum scores in BOTH Reading and Writing</i>	220 + ----- AND THEAR or TASP R (Reading) 230 +	ACCUE 6-8 or ACCUE 5 and ACCUO >80 ----- AND ACCU R (Reading) 78+	2200+ and 3+ on essay	500+ Critical Reading (Verbal) and 1070+ Composite	19+ English and 23+ Composite	N/A
<b>ENGL 1301 and ENGL 0302 require a minimum READING and WRITING score.</b>						

\*Students whose EVAL shows **TSI Complete** in Math may enroll in Math 0303 without further testing.

**EOIM99, EOIR99, or EOIW99:** Equivalent of **TSI Complete** in the specified area.

**Amarillo College  
Developmental  
Education Plan  
2009-2010**