

Amarillo College - Accessing Wireless Connection (GUEST)



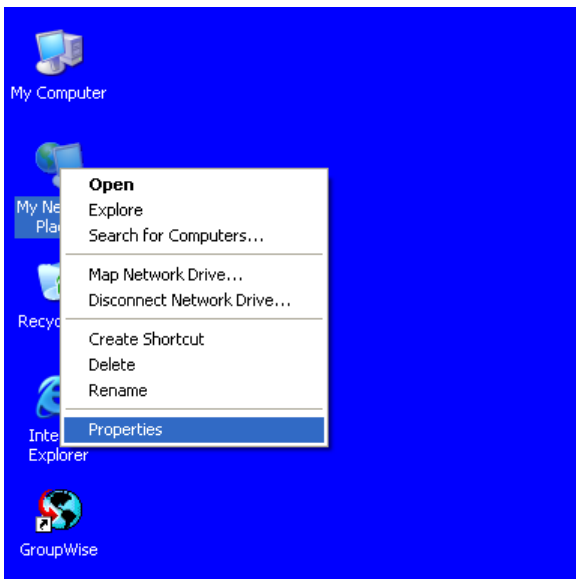
1. If wireless is enabled on your machine, it will be visible in the tray next to the clock. If enabled, skip to step 3.



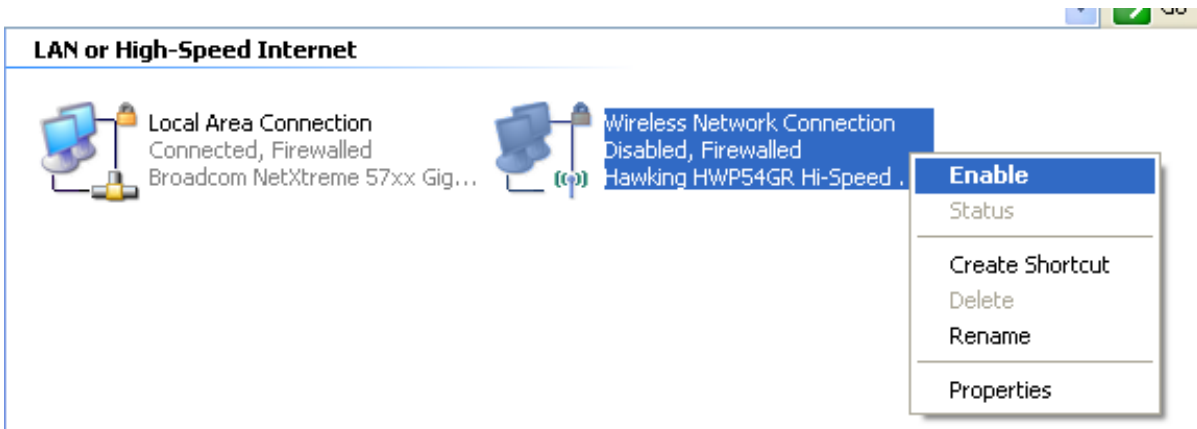
The icon will look like this

2. If it is not visible in the tray, your wireless card is disabled and it will need to be enabled.
(Some laptops also have a switch on the left side to turn the antenna on – Check this also if you cannot see any wireless connections to make sure it is on.)

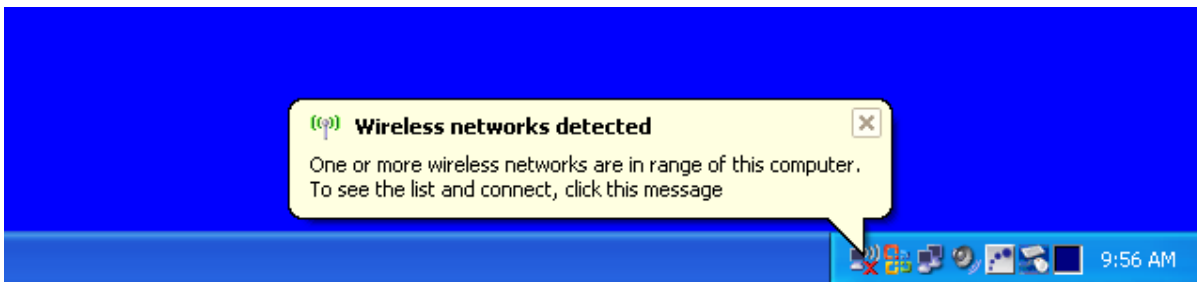
It can be enabled from My Network Places on your computer.



From the Desktop just right click My Network Places and select properties

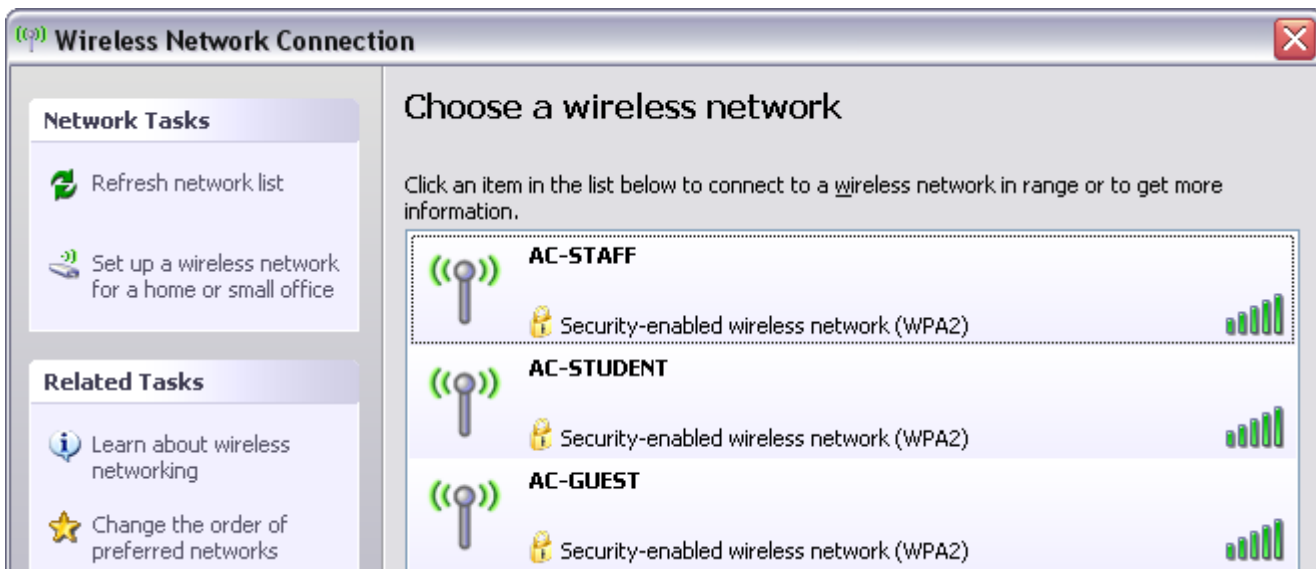


Next you will see the icons above. Just right click the icon for Wireless Network Connection and select enable. You will now see the wireless icon in the tray.



- Once it is enabled you will see this balloon letting you know Wireless has been detected. Just Right click the icon or click the balloon and it will pop up a list of Access Points close to you. (If the balloon does not appear, just single click the icon and it will bring up the list). If using Vista, select "Connect to a Network".

For **GUESTS** on campus the window will look similar to this below.



Next, select the SSID listed as **AC-GUEST** and then hit connect at the bottom

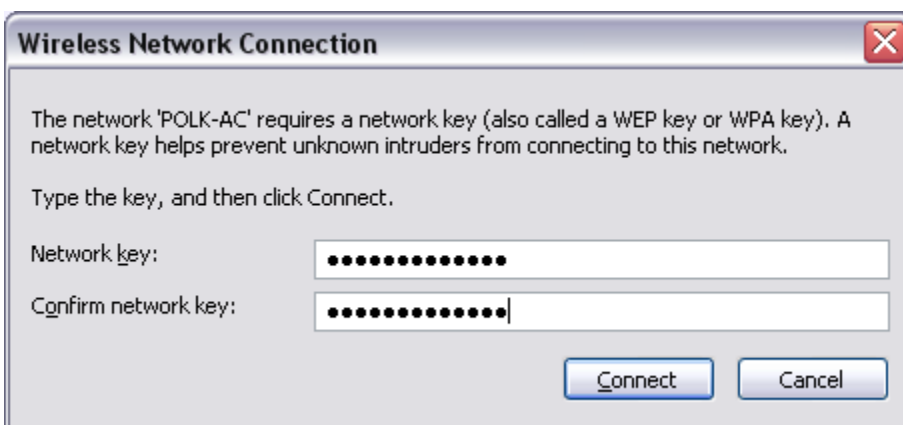


4. After you click the Connect button, the following window will appear



When this window appears, you will be required to input a key that will be provided by quest sponsor.

You will have to enter the key twice for confirmation. Vista users may not have to enter the key twice.



After you have entered the key for the second time, the SSID will display Acquiring Network Address. This will take several seconds.



5. When this completes the window will display that you are connected.



Vista users will see a screen stating “Successfully connected to AC-GUEST”. Check the box next to “Save this network”.

Not connected? Call 371-5373

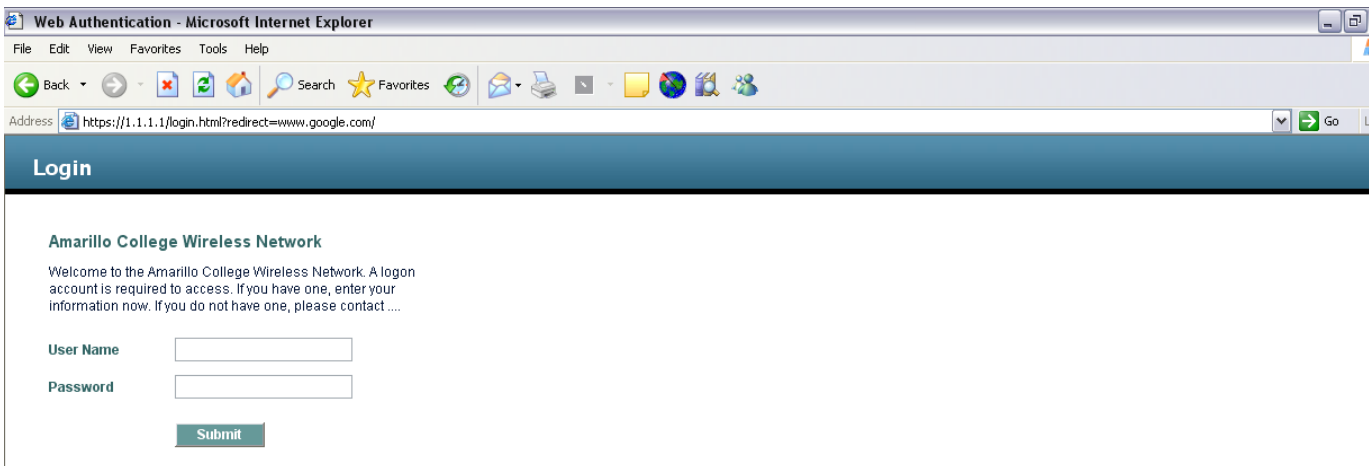
6. After you have connected to the Wireless, go to a browser (Internet Explorer) and click on the icon to launch the internet. When you do this the browser will open and you will be redirected to a certificate approval.

You will see this Certificate Security window appear – just select YES.



(If you have VISTA, the page will not open; you will get a firewall warning that says the page was a security risk. In the center of the page there will be a link to continue to open the page. Select this option and you will get to the login page.)

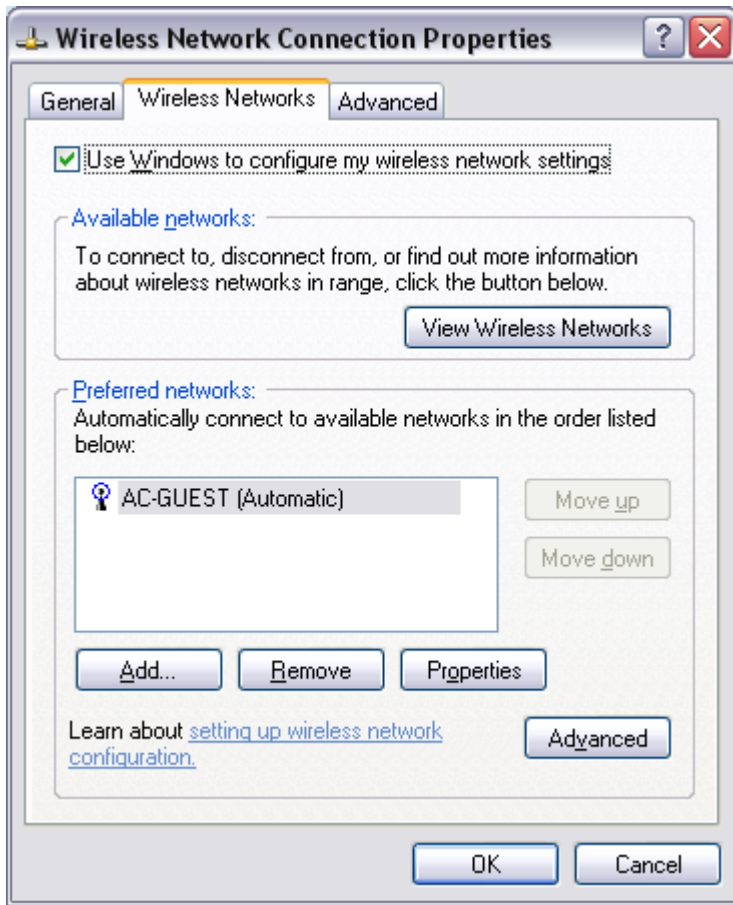
7. Once you have passed the certificate page, you will see the login page as seen below.



You will only have to go through this process once for the key.
(You will be required to login every time)

Enter your user name and password and you will have access to campus internet.
It should automatically open.

8. Once you have connected, Windows stores your connection in a list it keeps.



NOTE:

The keys will be rotated periodically for Security purposes.

When the keys are rotated, users will have to go through the steps of re-attaching to the Wireless connection.

Guest accounts only work for the time period specified by a visitor's sponsor.

Next time you are in range the wireless will connect you automatically.
You will still need to use your login and password.