



Amarillo College Wireless Connection Instructions for Laptop PCs AC-Wireless Account for Staff and Students

Amarillo College Faculty, Staff and Students

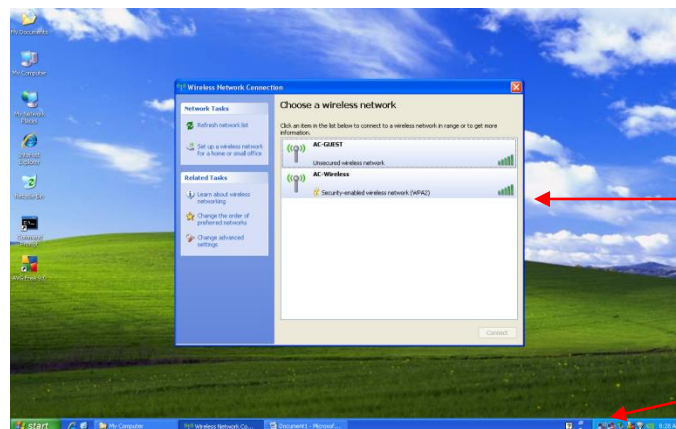
Amarillo College provides wireless internet access to all students and guests on personal laptops and wireless internet and AC LAN (local area network) access to all AC staff on AC laptops (and most personal laptops) at most buildings on the Washington campus, all of the West campus and all of B&I; soon, East campus will be wireless capable. Paperwork is no longer required to connect to the AC wireless network; just turn on your laptop, follow a few easy instructions and you are off and running.

Wireless access is segregated into two groups: AC-Guests and AC-Wireless (all AC employees and students). An AC-Wireless account has a 30-day duration, requires a valid ACNetID and other information for access, the laptop must have current anti-virus protection and data transfer is encrypted.

AC-Wireless account connection instructions

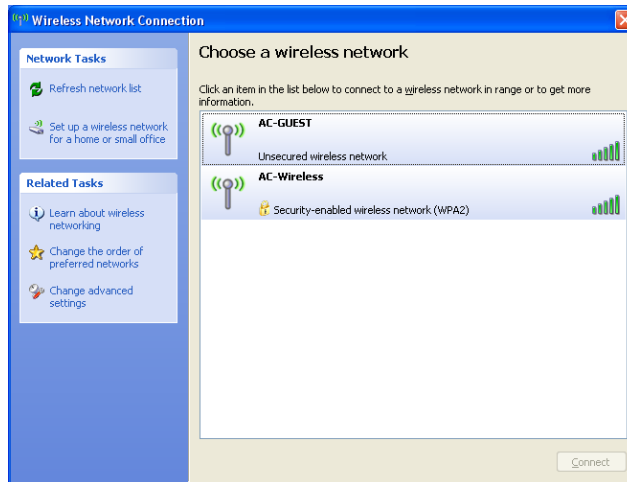
This account is for AC staff or students needing access to the internet (for both AC employees and students) and to the AC LAN (AC staff only)

1. Turn your laptop on. Once your machine is running, toggle your wireless adaptor to the 'on' position.
2. From your system tray (in the bottom right hand corner where the clock resides), click on the wireless connection icon to open up the available AC wireless connections screen:



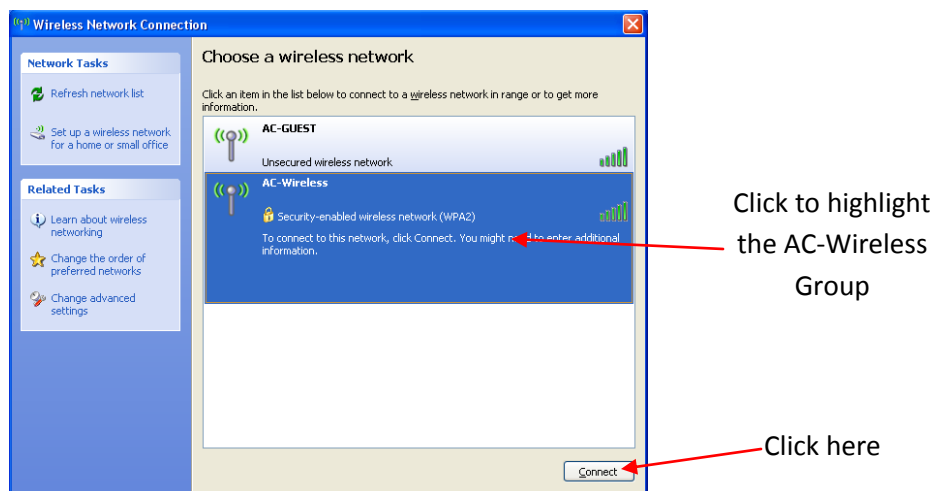
Available AC
wireless connection
groups

Wireless connection
icon

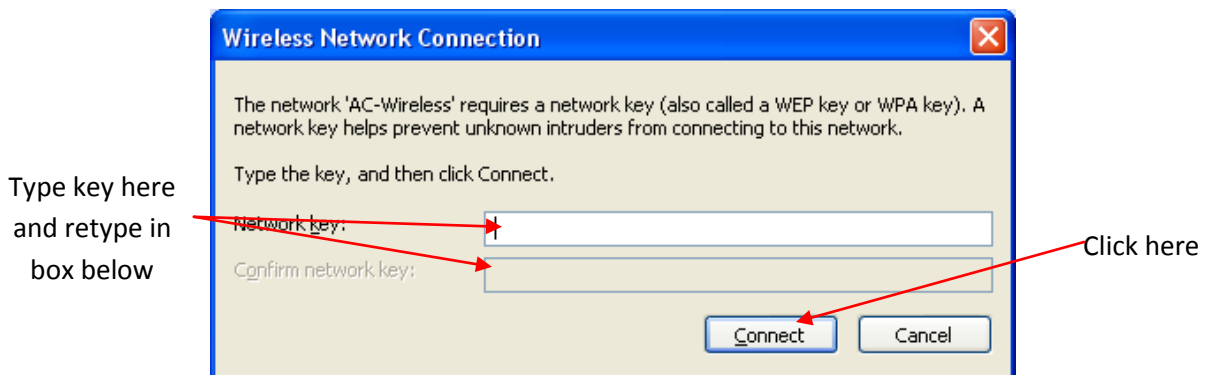


(you may see additional wireless network connections than the two illustrated above)

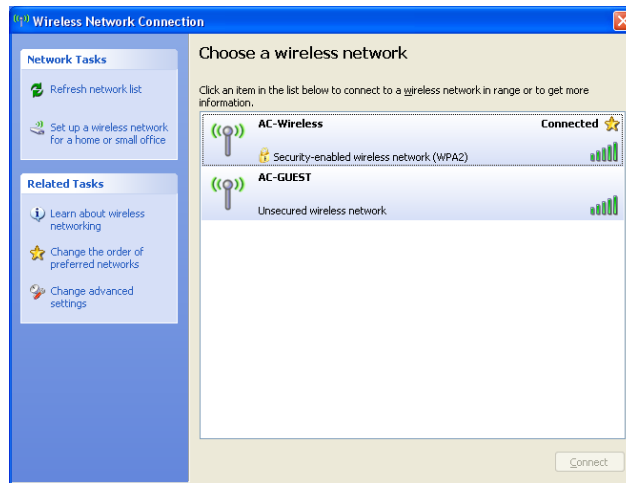
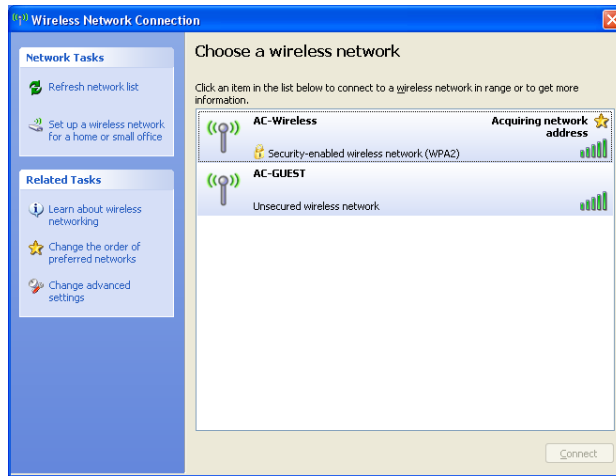
3. Click on the AC-Wireless link to highlight it. The 'Connect' button will become active; click it.



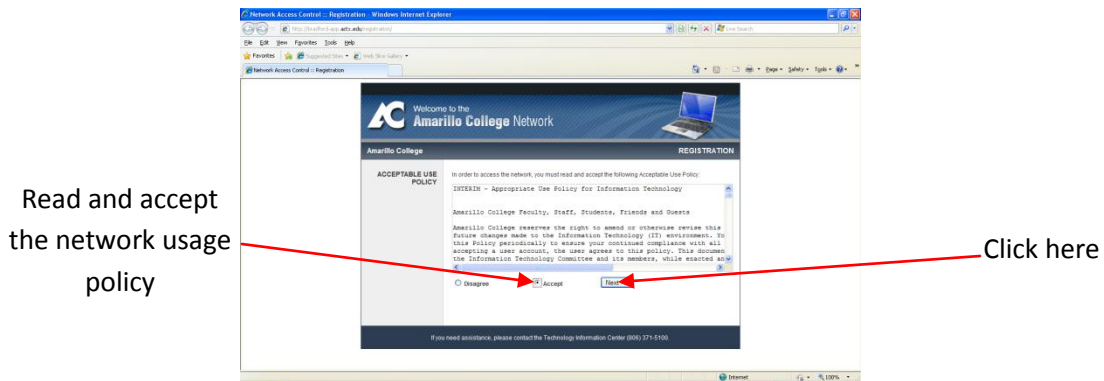
4. A window will open up that requires a network key to continue. The current key is AmarilloCollege . Type the key in and then confirm the key in the box below; click 'Connect'.



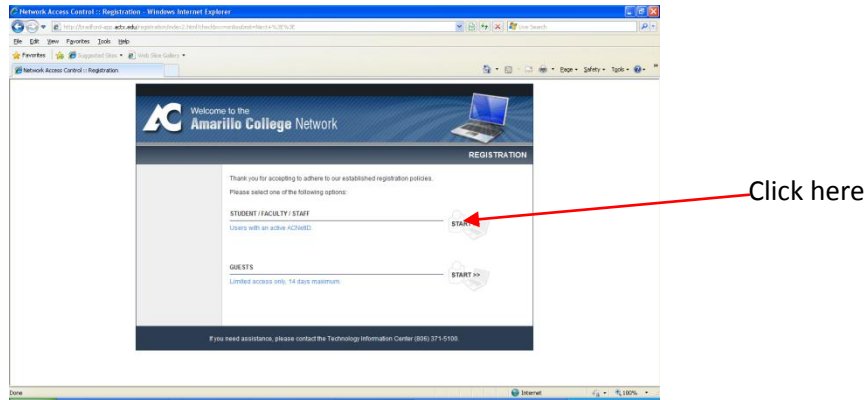
5. Progress windows showing the status of the wireless connection will now appear.



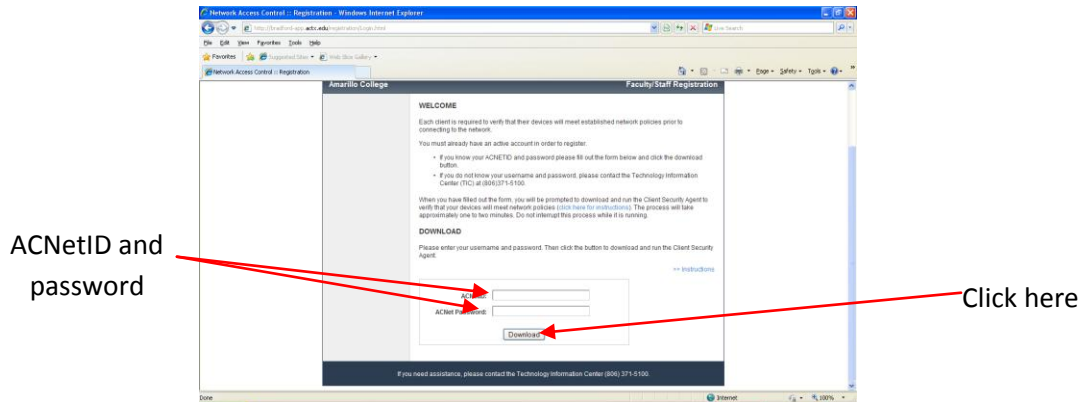
6. Once you have established a connection, launch an internet browser window. You will automatically be directed to the 'Amarillo College Network' policy site (this example uses Internet Explorer; Mozilla Firefox and Apple Safari work similar to IE). Read and accept the network usage policy; select the radio button to 'Accept' and click 'Next'.



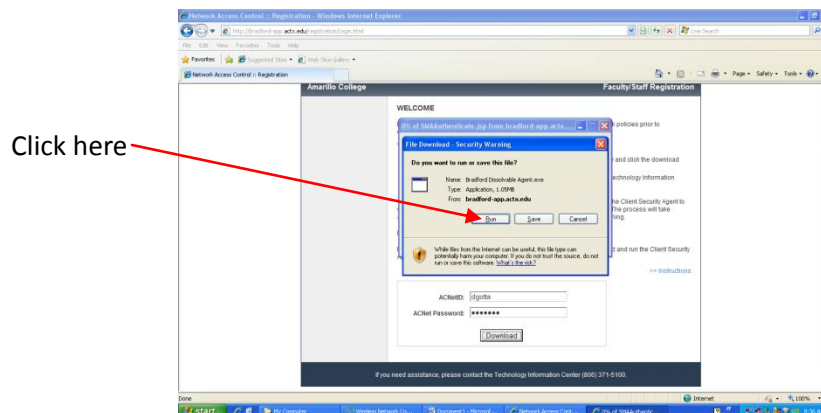
7. On the next screen, select the ‘Student/Faculty/Staff→Start’ button

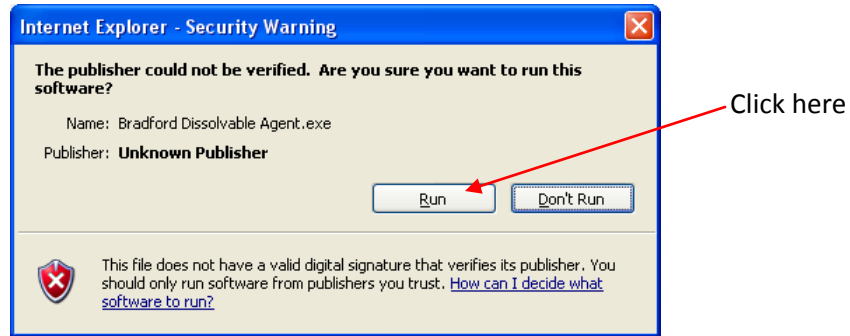


8. The next screen requires you to put in your ACNetID user name (for staff, this is your network/email username; for students, this is your WebAdvisor user name) and password and click ‘Continue’.



9. Depending upon which internet browser you are using, you may receive some security warnings asking whether you wish to run the Bradford software check of your computer (this software checks your computer for up-to-date antivirus programs and current operating system updates). For this Internet Explorer example, click ‘Run’ for both questions



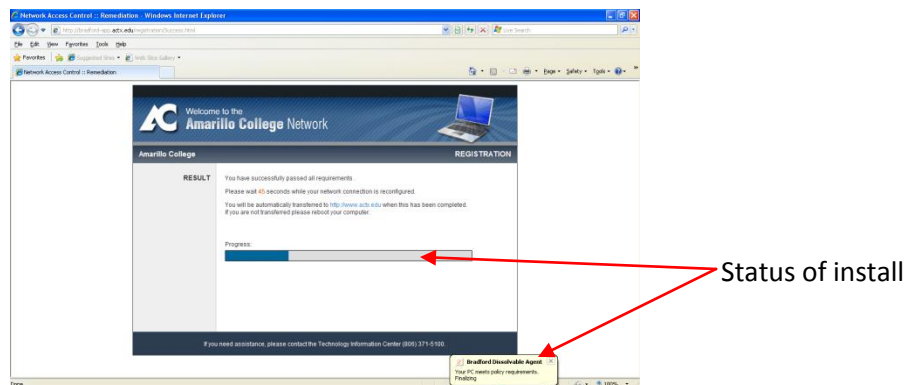


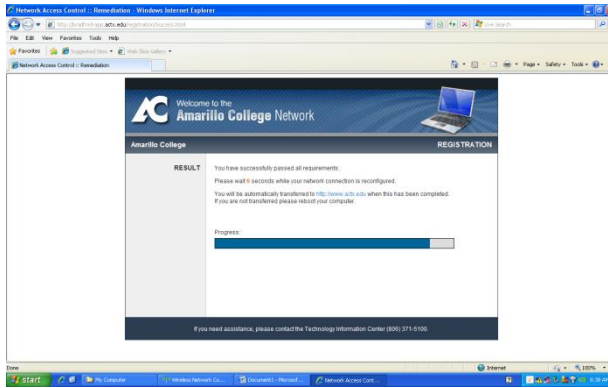
10. The Bradford software progress status window opens next.



This software recognizes a list of 15-20 common anti-virus programs that have been evaluated by AC staff for performance. If your program is not among those listed, access to the wireless network will be denied. We request that you then select one of the acceptable programs for use. We recognize that there are many other anti-virus programs on the market. If yours is not listed and you are denied access, you may request that your program be evaluated for performance by calling the TIC center and providing the name of the program and your contact information. Similarly, if your OS has not been updated, access will be denied until you install any available updates.

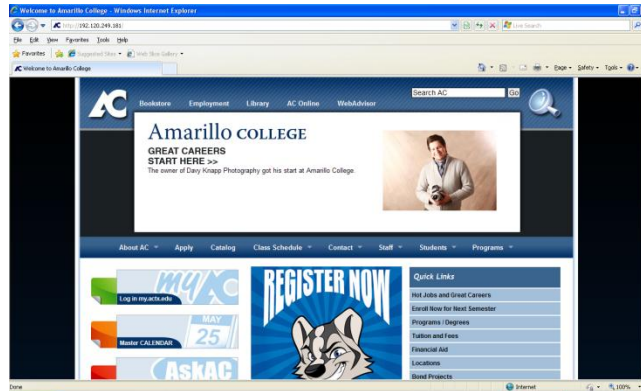
11. If your anti-virus software and OS updates are current, the Bradford will install a ‘dissolvable’ client on your machine which will detect and approve your machine when it attempts to connect to the wireless network again (This dissolvable client will allow you to connect to the wireless network for 30 days, at which time you will need to follow this procedure again).



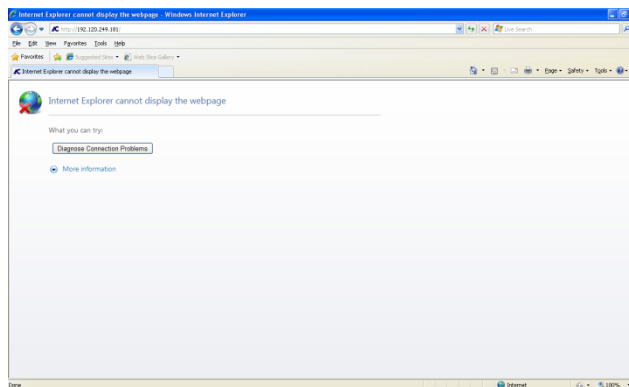


(For AC-tagged machines, a ‘persistent client’ is available for install. This installation will allow the user to access the wireless network without an expiration. Please contact the TIC to request this software install.)

12. Access to the network should now be complete. Your browser should point to the Amarillo College home page.



13. Some older laptops may require an additional 15-20 seconds to complete the network connection. If you see the screen below, wait this additional time period and then refresh your browser image.



last updated: 8/13/2010

This is a publication of Information Technology Services. For further assistance please contact the Technology Information Center (806) 371-5100, or email helpdesk-it@actx.edu.