



Planning and Evaluation Tracking

College Year: 2008-2009

Division of: Allied Health

Person Responsible: Bill Crawford

Department of: Medical Laboratory Technology

Person Responsible: Jan Martin

Purpose Statement: "The Medical Laboratory Technology program at Amarillo College is dedicated to providing students with the academic knowledge, the technical training, and the professional skills to enable them to serve as vital members of the healthcare team, within the framework of the Medical Laboratory Technician, in order to enhance the quality of life for individuals in and beyond our service area."

Goal Statements	Objectives/Outcomes (including assessment tools and standards)	Results	Use of Results (including improvements and revisions)
1. Students will be equipped with the cognitive knowledge and psychomotor skills for analysis and clinical decision-making, information management, regulatory compliance, education, and quality assurance/improvement wherever laboratory testing is researched, developed or performed.	A. 100% of graduating Sophomore students will meet or exceed a score of 70% on at least one of three final, comprehensive capstone exams, administered during the final semester of the Medical Laboratory Technology program. The tests are composed of questions covering all of the major and minor disciplines in clinical laboratory science. The questions utilize three taxonomic levels (recall, interpretation, and problem solving), and they are derived from registry-type questions from various nationally recognized Medical Lab registry review texts.	A. 2008 Class Average = 91.1% Class Range = 71.5%-97.5% (Please see chart/table 1A)	A. 100% of the students achieved a score well above the target score of 70%. The MLT faculty will continue to re-evaluate test questions to incorporate those related to new and emerging technologies in Clinical Laboratory Science.
	B. 100% of the students will achieve a score of 70% or better on the Task List student evaluation instruments in all Practicum I and II rotations, during the Sophomore year of the Medical Laboratory Technology program. This instrument provides an evaluation of the essential cognitive and psychomotor aspects of Medical Laboratory Technology in a professional, medical setting.	B. Students in the graduating class of 2008 earned Task List scores from 74.6% to 100.0%, with an overall average of 93.2% (Please see chart/table 1B)	B. The results over the past several years continue to be well above the target score of 70%. The MLT faculty will continue to incorporate current and new technologies into laboratory courses to well prepare student for Practicum experiences.

<p>2. Students will be able to demonstrate graduate/entry level technician knowledge and performance of routine and special clinical laboratory tests as the primary analyst, making specimen oriented decisions based on predetermined criteria, including a working knowledge of critical values.</p>	<p>A. 100% of all Medical Laboratory Technology Program graduates will have achieved a score of "Pass" on a Pass/Fail basis, indicating cognitive and psychomotor competency, for all areas indicated on the Amarillo College Medical Laboratory Technology Competency Profile. The profile is updated by program officials and adjunct clinical faculty at the conclusion of each semester of the Medical Laboratory Technology program, and completed prior to the last semester of the program. The profile includes basic tasks and psychomotor skills required of the entry level Medical Laboratory Technician.</p> <p>B. 100% of all program graduates will receive an average score of 3.5 or greater, a Likert scale of 1-5, on Employer Satisfaction Surveys. The surveys are mailed out to employers approximately 9 months to one year post graduation. The surveys include questions that encompass all three taxonomic domains. Specifically, technical work performance and professional skills and attitudes are addressed and evaluated.</p>	<p>A. 2008 Pass/Fail Rate = 100% Pass (Please see chart/table 2A)</p> <p>B. 2007 Employer Satisfaction Survey Results = 3.69 on a Likert scale of 1-5 (Please see chart/table 2B)</p>	<p>A. The Pass/Fail rate for the Medical Laboratory Technology Student Competency continues at a level of 100% passing. The faculty will continue to monitor student competency in all areas of the clinical laboratory, and also work with clinical/adjunct faculty to correct any deficiencies that arise.</p> <p>B. The Employer Satisfaction Survey Results for the graduating class of 2007 was greater than the substandard result in 2006, and increased above the targeted average of 3.50 . The faculty will continue to monitor student performance in all areas of the clinical laboratory, and also work with clinical/adjunct faculty and prospective employers to correct any deficiencies that arise in student performance prior to graduation from the program, and subsequent employment. In addition, the faculty have increased their emphasis on work ethics, and have incorporated a work ethics program, created by the state of Georgia. Students are now evaluated on their work ethics and given at least one work ethics assignment each week to be sure that they are aware of the true value of work ethics.</p>
---	---	---	---

<p>3. Knowledge and communication skills that extend to collaborative, consultative, and educational interactions with laboratory professionals, other healthcare professionals, patients, and the general public.</p>	<p>A. 90% of all currently enrolled Freshmen and Sophomore the students in the Medical Laboratory Technology Program will prepare an informational visual presentation pertaining to the clinical laboratory profession. Student participation will be evaluated by their instructors as part of their weekly Work Ethics grades on the basis of "participated/did not participate." These presentations are utilized to present information regarding different aspects of laboratory medicine during National Medical Laboratory Week, and are viewed by students and faculty in the Allied Health Division and the general public. The purpose of the presentations is to educate other medical professionals as well as the general public, and to promote the laboratory profession. All students enrolled in the Medical Laboratory Technology program are asked to participate.</p> <p>B. 100% of the Sophomore students will prepare and present an in-depth advanced research project, and achieve an average score of 90%, as evaluated by their instructor and their peers. The project will include a research paper prepared according to specific guidelines, set forth by program officials. The students will present their research to the Med Lab faculty and to their peers during the last semester of the Medical Laboratory Technology program. The presentation must include audio-visual aides and must demonstrate sufficient depth of knowledge as would be expected of students at this level of education. Evaluation of the presentation based on appropriate selection of subject, depth of subject</p>	<p>A. 2008 participation = 95.8% (Please see chart/table 3A)</p> <p>B. 2008 Research Presentations = 92.76% (Please see chart/table 3B)</p>	<p>A. This is a requirement for the students in the Medical Laboratory Technology program, however we feel that it is an excellent opportunity for students to develop additional knowledge and better public relations skills. In addition, it provides an occasion for students to promote their chosen profession to other health professional, as well as the general public. The 95.8% rate of participation is increased from the 86.5% rate of participation in 2007, and well above the standard of 90%. The faculty of the Medical Laboratory Technology program have revised requirements and created incentives for student participation. In addition, the project is now part of the work ethics evaluation for both Freshmen and Sophomore level students, and is also part of the research grade for Sophomores.</p> <p>B. The average score on the student research presentations was above the 90.0% goal. The range was 84- 100%. The average score was much improved, as compared to 2007. The faculty will continue to put greater emphasis on this project and encourage students to augment their research, written and verbal presentation skills prior to actual delivery of their research presentation.</p>
--	---	---	---

matter, structure of project,
communication/presentation
techniques, and audio/visual aides.

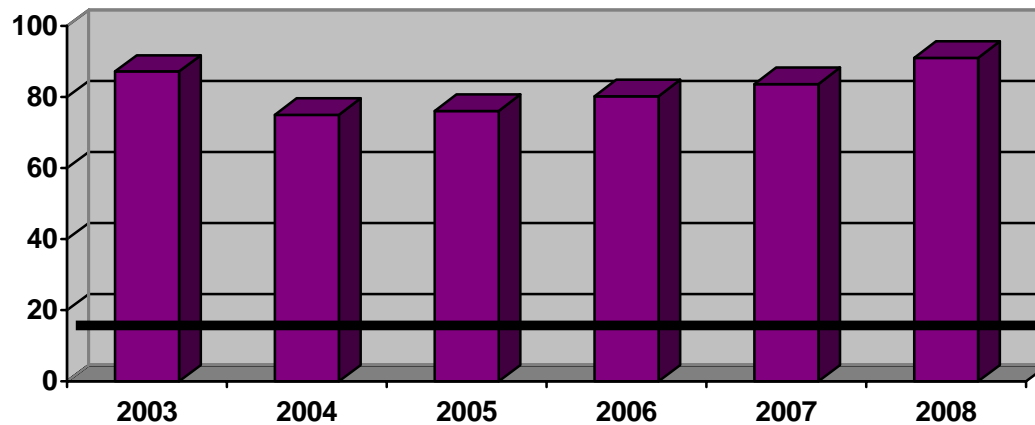
4. Demonstrated capacity for calm and reasoned judgment, taking responsibility for one's own actions, and a strong commitment to patient welfare. Ethical and moral attitudes and principles that are necessary for gaining and maintaining the confidence of patients, professional associates, and the community at large.

A. 100% of the students will achieve a score of 70% or better on the Student Professional Evaluation instruments in all Practicum I and II rotations, during the Sophomore year of the Medical Laboratory Technology program. This instrument provides an evaluation of the affective aspects of Medical Laboratory Technology in a professional medical setting including professionalism (attire, demeanor and conduct), dependability, ability to reason and learn, initiative, attitude, and adaptability.

A. Students in the graduating class of 2008 earned Student Professional scores from 78.9% to 100.0%, with an overall average of 93.2%
(Please see chart/table 4A)

A. The results are statistically similar to those of 2007, with a difference of -0.2% The faculty will continue to emphasize and evaluate the essential qualities of professionalism in the medical laboratory setting.

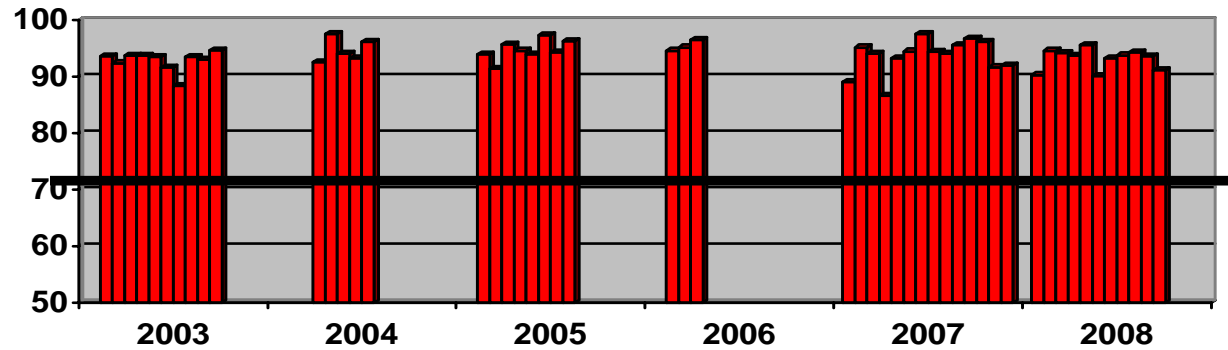
CHART/TABLE 1A – COMPREHENSIVE CAPSTONE EXAMINATIONS



"Best of Three" Individual Student Scores (%)	2003	2004	2005	2006	2007	2008
	94.0	70.0	70.0	82.5	80.5	93.4
	88.0	86.0	68.0	80.5	82.0	94.5
	78.0	73.5	82.5	78.0	94.0	92.5
	88.0	72.0	70.5		79.0	96.5
	90.0	74.0	74.5		83.5	97.5
	87.0		84.0		74.0	71.5
	86.0		77.5		84.5	94.0
	84.0		82.5		70.0	87.5
	86.0				77.0	97.5
	90.0				91.0	86.0
					90.0	
					91.5	
					80.5	
					94.5	
Class Average	87.1	75.1	76.2	80.3	83.3	91.1

CHART/TABLE 1B – STUDENT TASKLIST EVALUATIONS

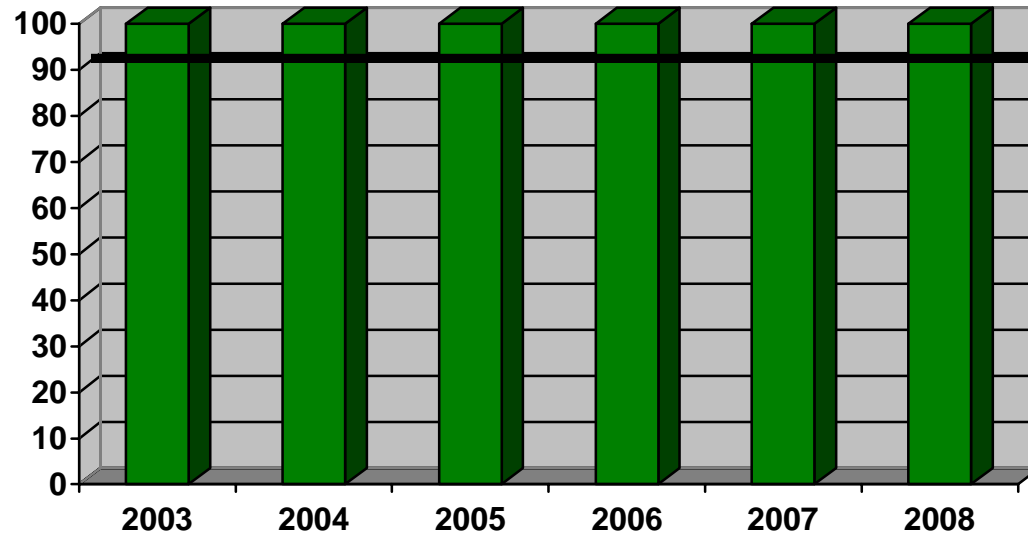
Student Task List Averages
(Average Per Student)



Graduating Class

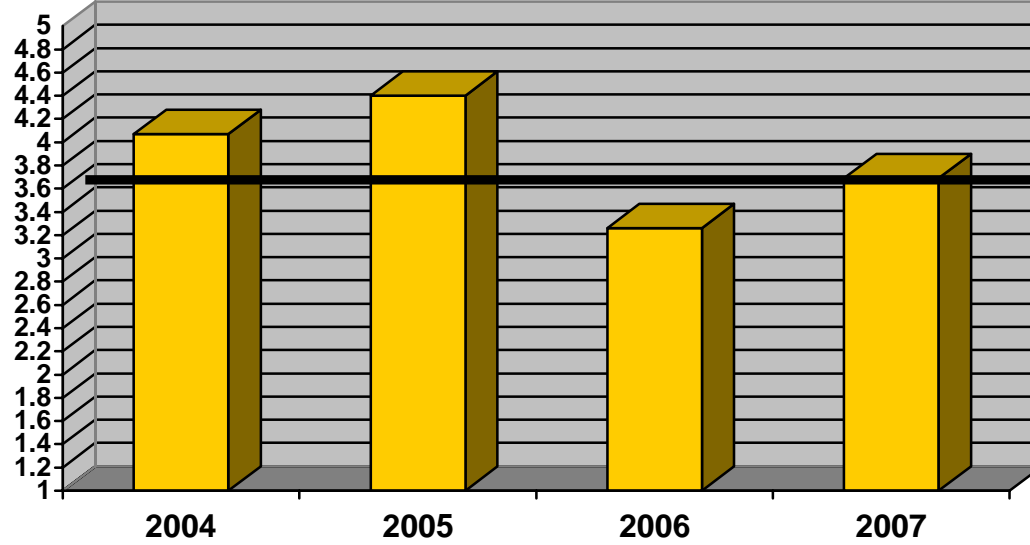
	2003			2004		2005		2006	2007					2008			
Individual Student Scores (%)	95	83	96	95	90	92	97	99	84	76	100	92	92	87.0	97.4	95.0	94.5
	89	91	100	95	97	89	95	89	98	93	91	95	95	92.3	92.7	95.0	97.4
	95	82	100	94	92	93	92	97	95	95	100	95	95	90.0	93.4	95.0	100.0
	90	97		95	100	93	95	91	86	95	99	90	89	91.3	98.3	95.0	90.1
	95	97		90	95	95	98	95	89	100	100	93	95	100.0	96.4	90.0	100.0
	96	95		83	95	99	88	95	95	90	99	94	94	81.7	91.1	92.8	99.7
	95	100		91	88	96	100	95	95	94	100	86	87	91.3	94.8	98.1	89.6
	95	94		90	95	97	96	95	93	95	95	90	93	95.0	87.6	98.5	94.5
	83	100		93		88	100	85	90	100	95	92	94	87.3	92.3	91.1	97.4
	90	95		99		85	100	97	94	89	95	99	98	100.0	94.8	98.5	100.0
	94	97		95		95	100	100	93	85	95	97	94	90.0	94.8	89.2	99.7
	95	100		95		93	89	95	94	80	95	100	94	90.0	87.0	90.0	89.6
	95	97		75		87	83	100	90	98	95	95	96	90.0	77.6	97.9	
	95	76		85		95	96	95	91	94	98	94	97	90.0	91.0	100.0	
	95	95		87		100	99	94	87	71	90	97	96	90.0	95.0	96.8	
	86	95		82		94	95	90	96	94	95	93		90.0	93.0	93.9	
	90	100		95		95	98	98	93	93	95	90		90.0	100.0	95.0	
	96	95		99		98	100	100	95	100	100	98		90.0	100.0	95.0	
	98	100		95		95	100	95	98	93	95	99		90.0	74.6	95.0	
	96	98		93		92	93	100	95	94	95	90		90.0	100.0	95.0	
	95	100		96		96	100	99	95	95	95	95		90.0	99.1	95.0	
	99	91		92		100	95		100	100	90	82		90.0	85.0	95.0	
	94	86		91		95	98		89	95	99	95		82.0	78.0	95.0	
	96	98		95		96	93		98	93	92	95		96.3	94.3	99.0	
	91	95		93		92	95		100	94	82	95		95.5	95.0	95.0	
	91	93		95		88			94	95	95	95		90.2	95.0	95.0	
	96	90		89		93			71	97	99	96		100.0	95.0	93.9	
	90	94		90		98			93	96	100	95		91.1	95.0	95.0	
	95	87		97		97			85	94	91	95		92.3	95.0	96.7	
	87	97		95		85			101	90	95	95		95.1	95.0	95.2	
95	100		95		93			93	92	95	100		100.0	89.2	92.0		

CHART/TABLE 2A – STUDENT COMPETENCY PROFILES



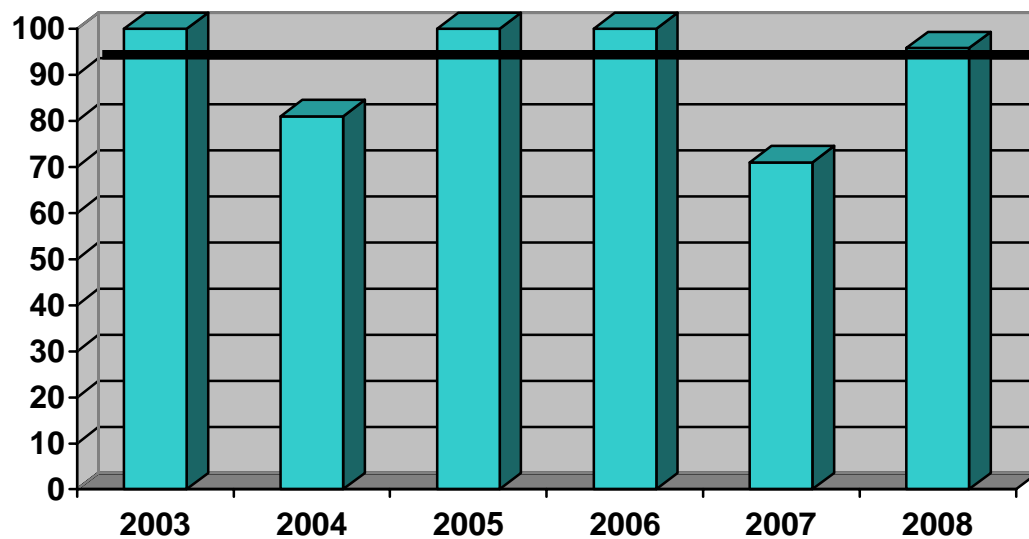
	2003	2004	2005	2006	2007		2008
Individual Student Pass/Fail	Pass	Pass	Pass	Pass	Pass	Pass	Pass
	Pass	Pass	Pass	Pass	Pass	Pass	Pass
	Pass	Pass	Pass	Pass	Pass	Pass	Pass
	Pass	Pass	Pass		Pass	Pass	Pass
	Pass	Pass	Pass		Pass		Pass
	Pass		Pass		Pass		Pass
	Pass		Pass		Pass		Pass
	Pass		Pass		Pass		Pass
	Pass				Pass		Pass
	Pass				Pass		Pass
Class Average	100% Pass	100% Pass	100% Pass	100% Pass	100% Pass		100% Pass

CHART/TABLE 2B – EMPLOYER SATISFACTION SURVEYS



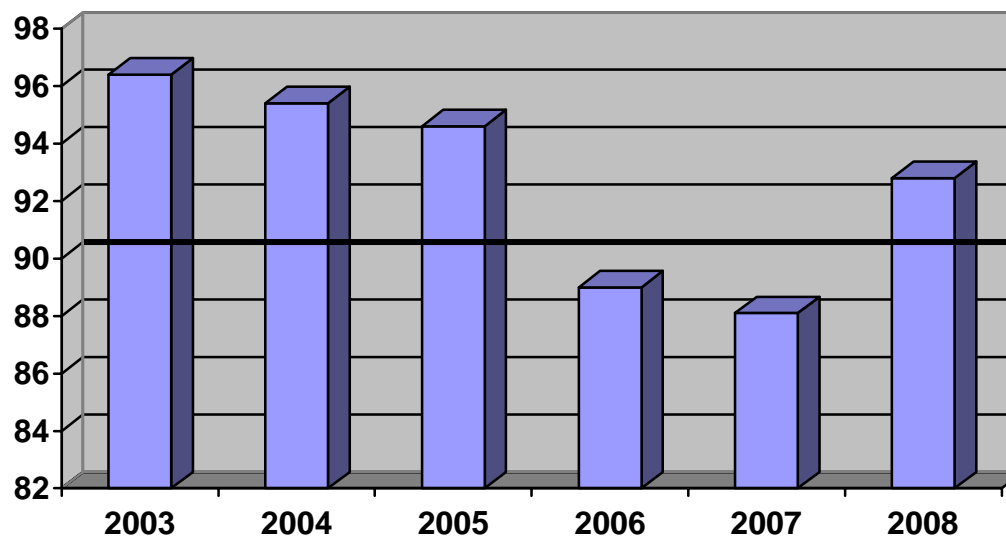
	2003	2004	2005	2006	2007
Average Overall Score (Likert Scale 1-5)	4.09	4.07	4.40	3.26	3.69

CHART/TABLE 3A – NATIONAL MEDICAL LABORATORY WEEK PRESENTATIONS



	2003	2004	2005	2006	2007	2008
%Participation	16/16=100%	13/16=81%	12/12=100%	3/3=100%	24/28=86%	23/24=95.8%

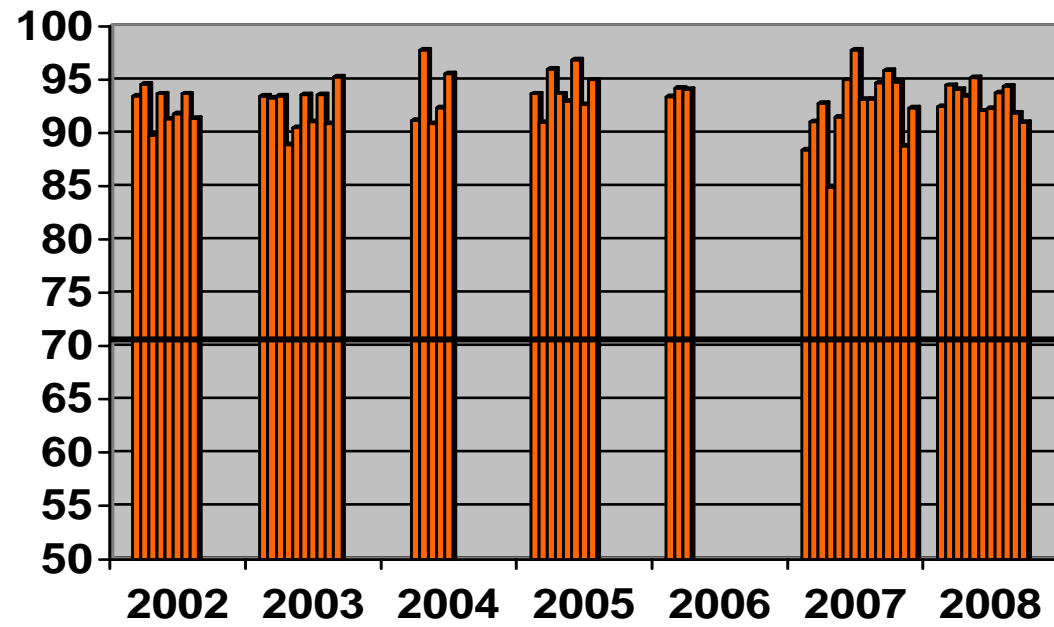
CHART/TABLE 3B – RESEARCH PRESENTATIONS



Individual Student Scores (%)	2003	2004	2005	2006	2007	2008
	97	95	85	75	91	92
	94	100	82	96	94	100
	94	90	98	96	93	91
	98	95	100		85	95
	98	98	95		46	96
	97		98		98	92
	100		99		97	94
	97		100		97	87
	94				83	97
	95				88	84
					79	
					94	
					95	
					94	
Average	96.4	95.6	94.6	89.0	88.1	92.8

CHART/TABLE 4A – STUDENT PROFESSIONAL EVALUATIONS

Student Professional Evaluation Averages
(Average Per Student)



**Actual Professional Evaluation Scores
Graduating Class**

	2003			2004		2005		2006	2007					2008			
Individual Student Scores (%)	95.0	95.0	91.0	96.0	94.1	76.0	100	98.7	85.3	80.0	100	95.7	95.0	85.0	90.0	92.0	99.6
	91.0	91.4	94.0	98.0	96.0	92.0	97.0	85.3	98.0	93.0	89.2	92.5	95.0	92.9	90.0	96.4	87.8
	98.2	94.0	97.0	92.0	90.1	88.0	100	96.7	94.0	95.0	100	98.7		90.0	90.0	93.0	93.0
	97.0	95.0	90.0	91.0	97.5	99.0	100	91.7	84.0	97.0	96.0	97.9		90.3	90.0	91.2	99.5
	95.0	87.5	95.0	97.0	92.6	96.3		91.6	88.0	97.7	99.0	99.1		94.3	90.0	100	99.6
	95.7	83.0	95.0	92.0	95.0	92.0		93.0	95.0	90.0	100	95.0		82.3	90.0	97.3	86.8
	95.0	92.7	94.0	99.0	88.2	95.0		95.0	95.0	95.3	90.6	90.0		87.9	90.0	92.4	
	95.0	89.5	95.0	96.0	95.0	100		95.0	90.8	94.7	92.1	95.0		95.4	90.0	92.3	
	77.0	91.3	85.0	100		97.7		83.9	89.0	94.2	95.0	95.0		91.7	90.0	96.7	
	88.0	96.0	89.0	100		100		96.1	90.0	87.3	95.0	95.0		90.3	90.0	93.7	
	94.6	93.6	96.0	95.0		95.0		100	93.0	85.0	95.0	94.6		91.7	90.0	90.2	
	92.1	95.0	93.0	82.0		96.4		95	93.7	83.0	95.0	98.0		92.6	84.0	95.0	
	94.3	69.6	84.0	81.0		96.4		94.3	87.0	100	95.0	95.0		96.0	95.0	95.0	
	95.0	88.8	85.0	96.0		99.0		95	90.0	96.0	94.0	95.0		95.5	95.2	99.9	
	91.0	89.0	99.0	99.0		71.0		91	78.0	79.7	98.0	95.0		91.5	99.9	97.4	
	87.0	88.0	93.0	95.0		95.0		91.3	96.0	94.5	90.0	100		93.4	99.7	100	
	92.0	96.0	95.0	99.0		92.0		100	94.5	94.6	95.0	95.0		94.3	85.6	96.1	
	97.5	95.6	99.0	97.0		93.0		100	85.6	98.6	95.0	95.0		92.5	99.4	95.0	
	98.0	95.0	95.0	98.0		95.0		95	92.5	92.6	100	95.0		94.3	98.9	90.4	
	94.0	90.4	97.0	93.0		94.0		90.5	100	96.3	95.0	90.0		93.1	90.3	93.2	
	95.7	93.0	96.0	100		96.0		91.3	94.5	95.7	95.0	92.9		84.4	79.0	95.0	
	94.3	90.0	97.0	93.0		93.9			97.7	100	95.0	91.0		78.9	94.3	95.0	
	93.8	95.0	92.0	98.0		91.0			85.1	87.0	95.0	81.2		95.3	98.6	95.0	
	96.4	95.0	98.0	91.0		87.3			96.0	90.0	95.0	90.9		95.0	93.9	95.0	
	84.3	96.0	85.0	92.0		95.7			100	94.0	93.0	95.7		95.0	98.5	95.0	
	89.9	95.0	88.0			95.1			93.7	91.3	80.0	97.3		95.0	98.5	95.0	
	92.9	93.0	99.0			94.0			70.0	98.0	95.0	93.7		95.0	96.3	95.0	
	86.0	88.1	98.0			90.0			84.8	95.0	99.3	94.4		95.0	90.0	95.0	
	95.0	96.0	91.0			92.1			85.0	80.0	100	92.5		95.0	90.7	95.8	
	91.0	91.7	87.0			83.0			100	83.0	93.0	91.3		95.0	90.3	95.0	
	94.0	95.0	95.0			97.5			97.0	95.0	95.0	94.3		95.0	97.8	95.0	