



## Planning and Evaluation Tracking

College Year: 2004-2005

Division of: Allied Health

Person Responsible: Bill Crawford

Department of: Medical Laboratory Technology

Person Responsible: Jan Martin

**Purpose Statement:** The Medical Laboratory Technology program at Amarillo College is dedicated to providing students with the academic and technical training, and the professional skills, to enable them to successfully perform as vital members of the healthcare team, within the framework of the Medical Laboratory Technician

Goal Statements	Objectives/Outcomes (including assessment tools and standards)	Results	Use of Results (including improvements and revisions)
1. Students will be equipped with the cognitive knowledge and psychomotor skills for analysis and clinical decision-making, information management, regulatory compliance, education, and quality assurance /improvement wherever laboratory testing is researched, developed or performed.	A. 100% of graduating Sophomore students will meet or exceed a score of 70% on at least one of three final, comprehensive capstone exams, administered during the final semester of the Medical Laboratory Technology program. The tests are composed of questions covering all of the major and minor disciplines in clinical laboratory science. The questions utilize three taxonomic levels (recall, interpretation, and problem solving), and they are derived from registry-type questions from various nationally recognized registry review texts.	A. 2004 Class Average = 75.1% (Please see chart/table 1A)	A. Although the results have been consistently above the 70% standard, it is apparent that the student scores were significantly lower in 2004 compared to 2003. New review materials have been purchased and several new/current registry review guides have been published and or updated within the last year. The faculty will require more intensive review sessions, and will continue to emphasize good study techniques.
	B. 100% of the students will achieve a score of 70% or better on the Task List student evaluation instruments in all Practicum I and II rotations, during the Sophomore year of the Medical Laboratory Technology program. This instrument provides an evaluation of the essential cognitive and psychomotor aspects of Medical Laboratory Technology in a professional, medical setting.	B. Students in the graduating class of 2004 earned Task List scores from 92.6% to 97.6%, with an overall average of 94.76% (Please see chart/table 1B)	B. The results over the past three years have shown a steady overall increase. The faculty will continue to incorporate current and new technologies into laboratory courses to well prepare student for Practicum experiences.

<p>2. Students will be able to demonstrate graduate/entry level technician knowledge and performance of routine and special clinical laboratory tests as the primary analyst, making specimen oriented decisions based on predetermined criteria, including a working knowledge of critical values.</p>	<p>A. 100% of all Medical Laboratory Technology Program graduates will have achieved a score of "Pass" on a Pass/Fail basis, indicating cognitive and psychomotor competency, for all areas indicated on the Amarillo College Medical Laboratory Technology Competency Profile. The profile is updated by program officials and adjunct clinical faculty at the conclusion of each semester of the Medical Laboratory Technology program, and completed prior to the last semester of the program. The profile includes basic tasks and psychomotor skills required of the entry level Medical Laboratory Technician.</p>	<p>A. 2004 Pass/Fail Rate = 100% Pass (Please see chart/table 2A)</p>	<p>A. The Pass/Fail rate for the Medical Laboratory Technology Student Competency has consistently been at a level of 100% passing. The faculty will continue to monitor student competency in all areas of the clinical laboratory, and also work with clinical/adjunct faculty to correct any deficiencies that arise.</p>
	<p>B. 100% of all completed and returned Employer Satisfaction Surveys will rate employees, who are graduates of the Amarillo College Medical Laboratory Technology Program, with an average score of at 3.5 on a Likert scale of 1-5. The surveys are mailed out to employers approximately 9 months to one year post graduation. The surveys include questions that encompass all three taxonomic domains. Specifically, test performance and professional skills and attitudes are addressed and evaluated.</p>	<p>B. 2004 Employer Satisfaction Survey Results = 4.07 on a Likert scale of 1-5 (Please see chart/table 2B)</p>	<p>B. The Employer Satisfaction Survey Results for the Medical Laboratory Technology graduates has consistently been at a level well above the 3.5 standard. The faculty will continue to monitor student performance in all areas of the clinical laboratory, and also work with clinical/adjunct faculty and prospective employers to correct any deficiencies that arise in student performance prior to graduation from the program, and subsequent employment.</p>
<p>3. Knowledge and communication skills that extend to collaborative, consultative, and educational interactions with laboratory professionals, other healthcare professionals, patients, and the general public.</p>	<p>A. 90% of the students will prepare an informational visual presentation pertaining to the clinical laboratory profession. The presentation is utilized to present information regarding different aspects of laboratory medicine during National Medical Laboratory Week, and is viewed by students and faculty in the Allied Health Division, as well as the general</p>	<p>A. 2004 participation = 81.0% (Please see chart/table 3A)</p>	<p>A. This is a fairly new requirement for the students in the Medical Laboratory Technology program, however we feel that it is an excellent opportunity for students to develop additional knowledge and better public relations skills. In addition, it provides an occasion for students to promote their chosen profession to other</p>

public. The purpose of the presentation is to augment the student's cognitive understanding of at least one aspect of laboratory medicine, to educate other medical professionals as well as the general public, and to promote the laboratory profession. All students enrolled in the Medical Laboratory Technology program are strongly encouraged to participate.

- B. 100% of the Sophomore students will prepare and present an in-depth advanced research project, and achieve an average score of 90%, as evaluated by their instructor and their peers. The project will include a research paper prepared according to specific guidelines, set forth by program officials. The students will present their research to the Med Lab faculty and to their peers during the last semester of the Medical Laboratory Technology program. The presentation must include audio-visual aides and must demonstrate sufficient depth of knowledge as would be expected of students at this level of education. Evaluation of the presentation based on appropriate selection of subject, depth of subject matter, structure of project, communication/presentation techniques, and audio/visual aides.

- B. 2004 Research Presentations = 95.4%  
(Please see chart/table 3B)

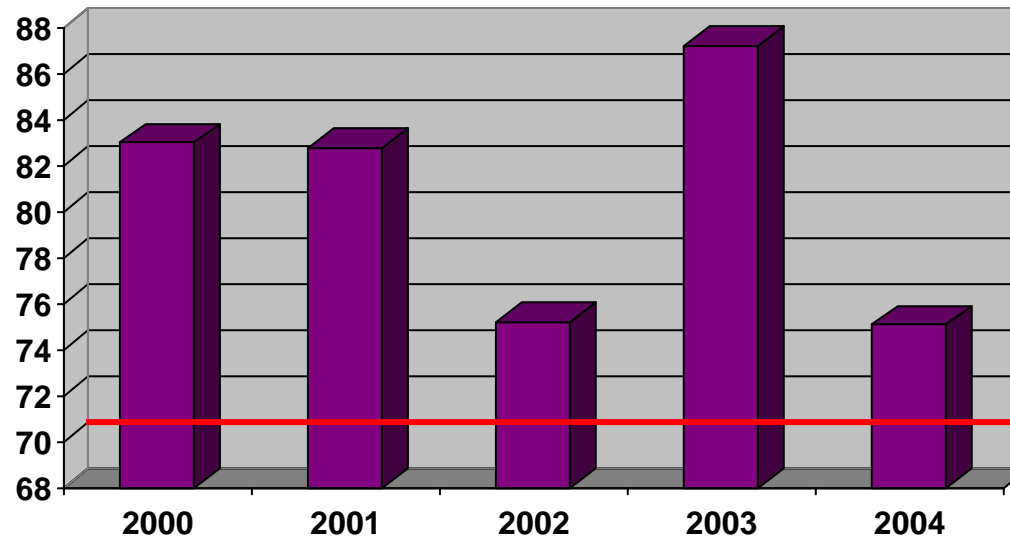
health professional, as well as the general public. The 81% rate of participation is well below the standard of 90%. The faculty of the Medical Laboratory Technology program have revised requirements and incentives for student participation.

- B. The average student score in 2004 was statistically similar to the average student score in 2003. The faculty will continue to investigate new and exciting topics in clinical laboratory medicine to augment student interest and to perhaps continue to generate enthusiasm for this project.

4. Demonstrated capacity for calm and reasoned judgment, taking responsibility for one's own actions, and a strong commitment to patient welfare. Ethical and moral attitudes and principles that are necessary for gaining and maintaining the confidence of patients, professional associates, and the community at large.	A. 100% of the students will achieve a score of 70% or better on the Student Professional Evaluation instruments in all Practicum I and II rotations, during the Sophomore year of the Medical Laboratory Technology program. This instrument provides an evaluation of the affective aspects of Medical Laboratory Technology in a professional medical setting including professionalism (attire, demeanor and conduct), dependability, ability to reason and learn, initiative, attitude, and adaptability.	A. Students in the graduating class of 2004 earned Student Professional scores from 90.9% to 97.8%, with an overall average of 93.58% (Please see chart/table 4A)	A. The results over the past three years have shown a steady overall increase. The faculty will continue to emphasize the essential qualities of professionalism in the medical laboratory setting.
--	--	---	---

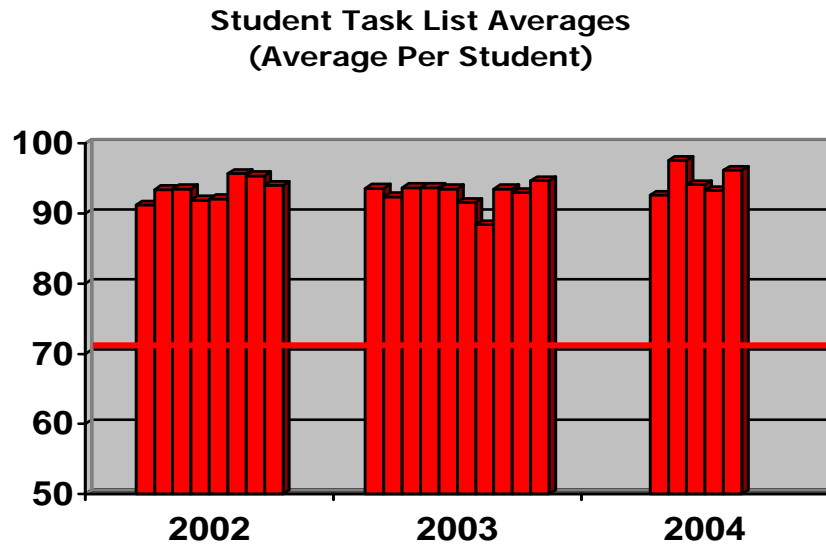
revised 10/19/07

**CHART/TABLE 1A – COMPREHENSIVE CAPSTONE EXAMINATIONS**



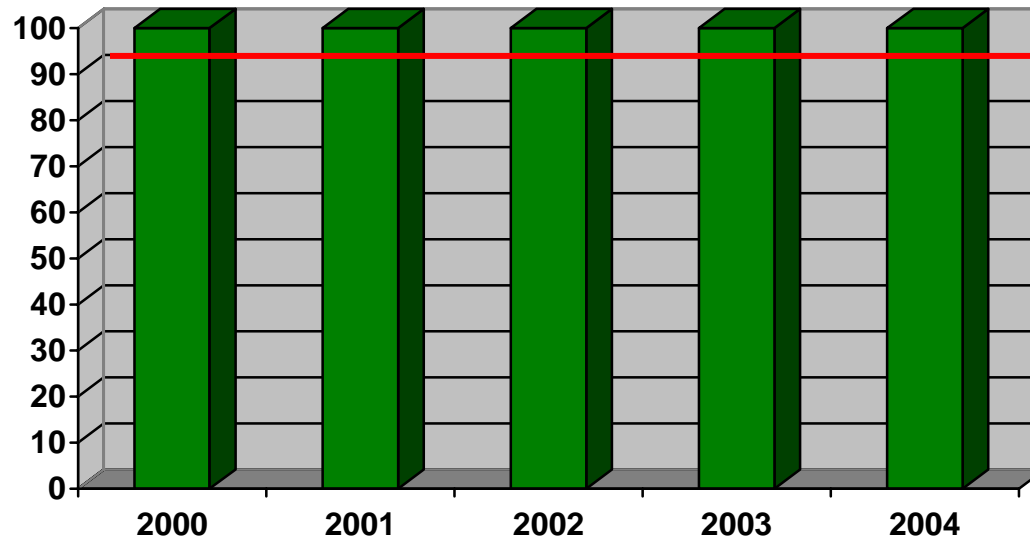
	2000	2001	2002	2003	2004
<b>“Best of Three” Individual Student Scores (%)</b>	89.5	84.0	70.0	94.0	70.0
	72.5	91.0	76.0	88.0	86.0
	91.5	91.5	82.0	78.0	73.5
	95.5	86.0	73.0	88.0	72.0
	89.0	74.5	74.0	90.0	74.0
		70.0	76.0	87.0	
			72.0	86.0	
			80.0	84.0	
				86.0	
				90.0	
<b>Class Average</b>	<b>83.0</b>	<b>82.8</b>	<b>75.2</b>	<b>87.1</b>	<b>75.1</b>

**CHART/TABLE 1B – STUDENT TASKLIST EVALUATIONS**



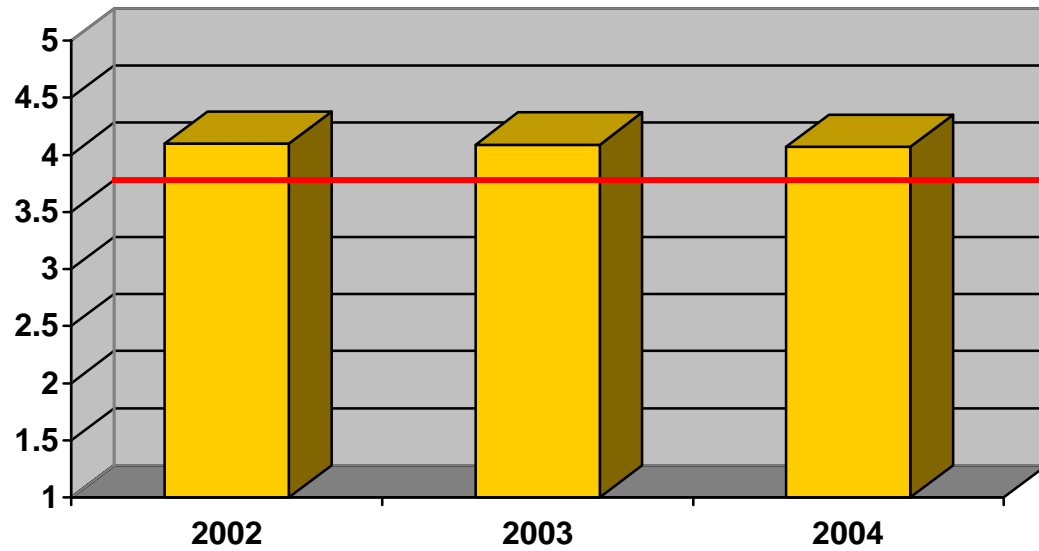
Graduating Class									
	2002			2003			2004		
	88	83		95	95	90	83	96	
Individual Student Scores (%)	86	95		89	95	97	91	100	
	84	100		95	94	92	82	100	
	95	90		90	95	100	97		
	95	93		95	90	95	97		
	92	84		96	83	95	95		
	98	120		95	91	88	100		
	92	95		95	90	95	94		
	95	89		83	93		100		
	91	93		90	99		95		
	91	95		94	95		97		
	100	93		95	95		100		
	91	100		95	75		97		
	95	91		95	85		76		
	92	95		95	87		95		
	93	95		86	82		95		
	99	99		90	95		100		
	99	95		96	99		95		
	95	95		98	95		100		
	95	95		96	93		98		
	95	88		95	96		100		
	92	94		99	92		91		
	85	95		94	91		86		
	96	95		96	95		98		
	87	95		91	93		95		
	90			91	95		93		
	95			96	89		90		
	98			90	90		94		
	92			95	97		87		
	95			87	95		97		
	90			95	95		100		

**CHART/TABLE 2A – STUDENT COMPETENCY PROFILES**



	2000	2001	2002	2003	2004
Individual Student Pass/Fail	Pass	Pass	Pass	Pass	Pass
	Pass	Pass	Pass	Pass	Pass
	Pass	Pass	Pass	Pass	Pass
	Pass	Pass	Pass	Pass	Pass
	Pass	Pass	Pass	Pass	Pass
		Pass	Pass	Pass	
			Pass	Pass	
			Pass	Pass	
				Pass	
				Pass	
Class Average	100% Pass	100% Pass	100% Pass	100% Pass	100% Pass

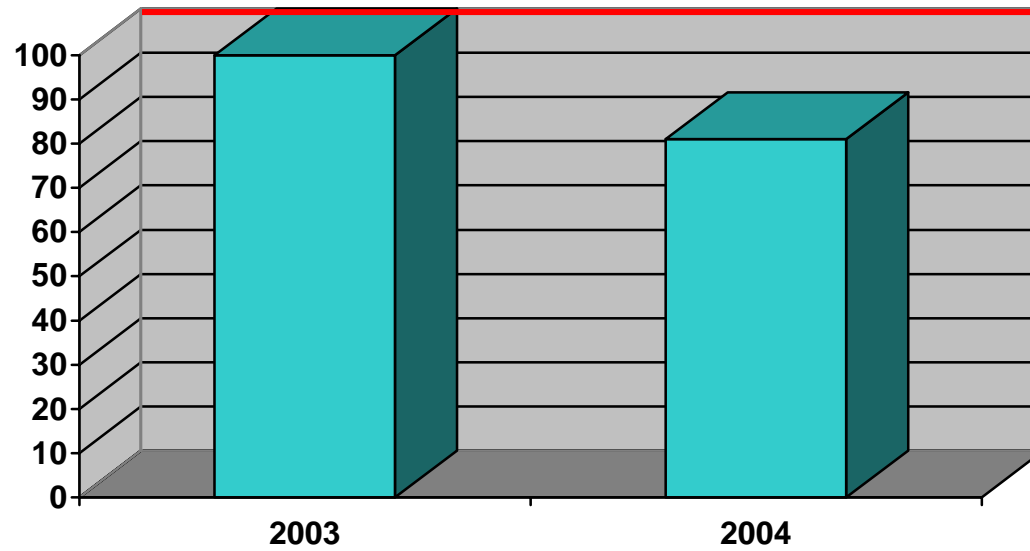
**CHART/TABLE 2B – EMPLOYER SATISFACTION SURVEYS**



	2002	2003	2004
Average Overall Score (Likert Scale 1-5)	4.10	4.09	4.07

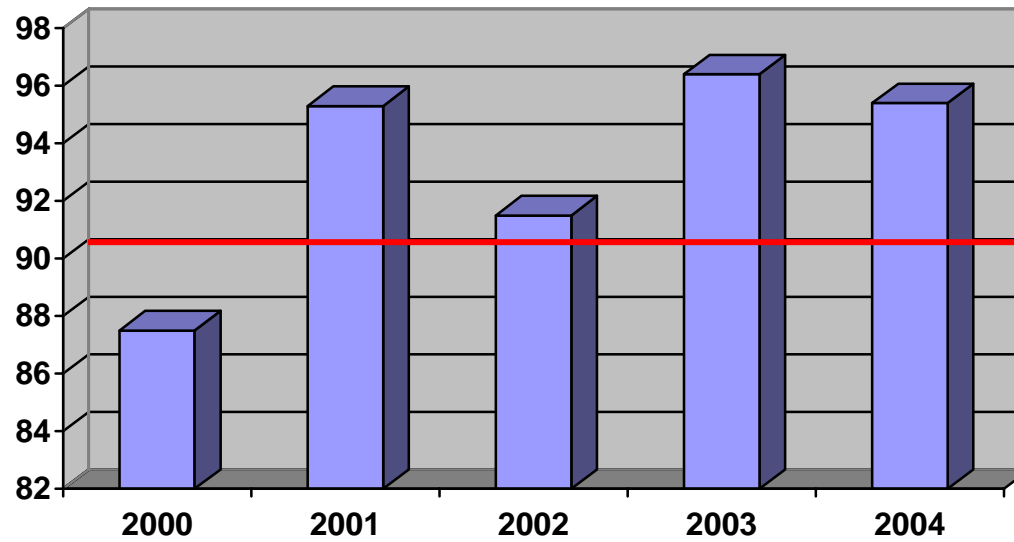


**CHART/TABLE 3A – NATIONAL MEDICAL LABORATORY WEEK PRESENTATIONS**



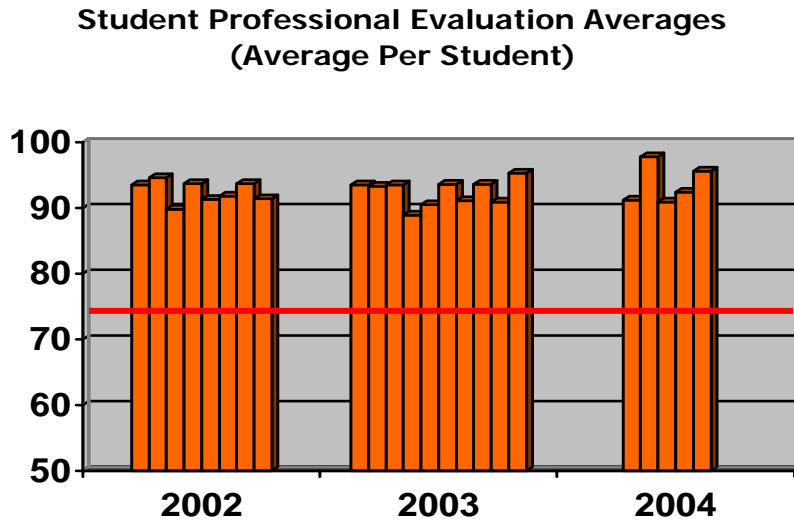
	2003	2004
%Participation	16/16=100%	13/16=81%

**CHART/TABLE 3B – RESEARCH PRESENTATIONS**



	2000	2001	2002	2003	2004
Individual Student Scores (%)	87	99	95	97	95
	88	97	100	94	100
	75	98	87	94	90
	92	95	92	98	95
	94	90	90	98	98
	89	93	87	97	
			87	100	
			94	97	
				94	
				95	
Class Average	87.5	95.3	91.5	96.4	95.4

CHART/TABLE 4A – STUDENT PROFESSIONAL EVALUATIONS



Graduating Class								
	2002		2003			2004		
Individual Student Scores (%)	90.3	95.0		95.0	95.0	94.1	76.0	100
	87.8	95.3		91.0	91.4	96.0	92.0	97.0
	84.0	92.8		98.2	94.0	90.1	88.0	100
	89.1	84.7		97.0	95.0	97.5	99.0	100
	95.3	100		95.0	87.5	92.6	96.3	
	95.6	91.2		95.7	83.0	95.0	92.0	
	97.5	87.0		95.0	92.7	88.2	95.0	
	91.4	89.9		95.0	89.5	95.0	100	
	90.9	75.5		77.0	91.3		97.7	
	95.0	94.6		88.0	96.0		100	
	91.1	95.5		94.6	93.6		95.0	
	91.0	95.0		92.1	95.0		96.4	
	100	92.7		94.3	69.6		96.4	
	95.0	100		95.0	88.8		99.0	
	92.7	91.0		91.0	89.0		71.0	
	93.5	95.0		87.0	88.0		95.0	
	87.4	90.6		92.0	96.0		92.0	
	90.6	99.3		97.5	95.6		93.0	
	85.1	93.9		98.0	95.0		95.0	
	95.3	95.0		94.0	90.4		94.0	
	95.9	96.1		95.7	93.0		96.0	
	95.0	88.5		94.3	90.0		93.9	
	92.5	89.5		93.8	95.0		91.0	
	84.7	95.0		96.4	95.0		87.3	
	92.1	95.0		84.3	96.0		95.7	
	90.3	95.6		89.9	95.0		95.1	
	83.2			92.9	93.0		94.0	
	93.5			86.0	88.1		90.0	
	92.8			95.0	96.0		92.1	
	93.8			91.0	91.7		83.0	
	95.0			94.0	95.0		97.5	