

# 15th Annual Child Abuse Prevention CONFERENCE

Amarillo, Texas

*Presented in Recognition of Child Abuse Prevention Month (April)*

**Thursday  
March 26, 2015**

**8:30 a.m. to 5:00 p.m.**

*Registration/Check-In begins at 7:45 a.m.*

**F E A T U R I N G**

*John Seita*

**In Whose Best Interest**

**Private Logic**

**The Private Logic of Connecting  
with Kids Who Outwit Adults**

*Bill Eddy*

**Understanding and Managing  
High Conflict Personality Disorders**

**Don't Alienate the Kids: Raising Resilient  
Children in a High Conflict World**



**Amarillo College**

Criminal Justice Programs

**Cost: \$25.00** (Lunch included)

*PRPC-sponsored for qualifying law enforcement officers.*

**Location:** **Amarillo Civic Center  
Grand Plaza**  
401 S. Buchanan  
Amarillo, Texas 79101

*Located in the southwest corner of the Civic Center at entrances 11/12;  
driving directions and map available at [www.civicamarillo.com](http://www.civicamarillo.com)*

**Hotel Reservations:** A block of rooms, with a special rate of \$83 single/double occupancy, has been reserved at the Holiday Inn West Amarillo Medical Center, 8231 W. Amarillo Blvd., Amarillo, Texas 79124, for the night of March 25, 2015. Call (806) 322-4777 for reservations and mention the "Amarillo College-CAP Conference" to receive this special rate. Rooms are available on a first-come, first-served basis.

**Contact:**

Amarillo College  
Criminal Justice Programs  
P. O. Box 447  
Amarillo, TX 79178

Phone: (806) 354-6081  
Fax: (806) 354-6074  
[www.actx.edu/cj/cap](http://www.actx.edu/cj/cap)  
[criminaljustice@actx.edu](mailto:criminaljustice@actx.edu)

**Target Audience/CEUs:** Probation officers, school resource/law enforcement officers who work with youth, caseworkers, CASA volunteers, counselors, nurses, teachers, school administrators, foster or adoptive parents, and all other related professionals. **No children allowed.**

Amarillo College Center for Continuing Healthcare Education is an approved provider of continuing nursing education by the Texas Nurses Association, an accredited approver by the American Nurses Credentialing Center's Commission on Accreditation.

Credit hours will be submitted to TCOLE and TJJD for approval. CEUs will be awarded for Social Workers and LPC/LMFTs. Amarillo College is approved by the State Board of Educator Certification as a provider of Continuing Professional Education (CPE). Amarillo College is approved by the Texas Certification Board of Addiction Professionals Standards Committee, Provider Number 1743-06, to provide 6 hours general and CCJP credit. Expires 08/15. Complaints about provider or workshop content may be directed to the TCBAAP Standards Committee, 1005 Congress Avenue, Ste. 460, Austin, Texas 78701, Fax Number (512) 476-7297. General CEUs will be awarded to all participants. For successful completion, this program must be attended in its entirety.

**Handouts** will not be provided at the conference in order to save paper/printing costs. They will be available for download at [www.actx.edu/cj/cap](http://www.actx.edu/cj/cap) from March 23-April 3, 2015.

# John Seita

## In Whose Best Interest Private Logic The Private Logic of Connecting with Kids Who Outwit Adults

**Dr. John Seita** holds a doctorate from Western Michigan University. Today, he is on the faculty of the School of Social Work at Michigan State University where he also has appointments with MSU Extension/4-H and with the Michigan Agricultural Experimental Station. He is also a father and a husband.

Dr. Seita is a former youth at risk who beat the odds. He was removed from his mother's home at the age of eight and spent the remainder of his childhood and adolescence in multiple foster homes, detention facilities, group care settings and on the streets. Abused and neglected as a child, his journey through children's institutions and countless foster homes was a litany of degradation and humiliation. His unrestrained anger at his mother and the child welfare system led to a childhood of bitterness, loneliness and one where he fought with adults, counselors, teachers, house parents, childcare workers and anyone else who crossed his path. Seita's understanding of how to reclaim challenging youth is based upon his own journey of 15 out-of-home placements.

With Dr. Seita, you will experience much more than a litany of sad stories. Experiences shared from his own remarkable journey are a platform for understanding lessons learned so that you are better able to connect with challenging young people, improve the quality of your skills, and to reclaim all young people.

Dr. Seita is the only foster care alumnus who has studied youth at risk and provides research-based training, professional development, and insight into the private logic of defiance. His presentations have been called powerful, honest, useful, practical, and visionary. His revolutionary efforts towards policy and practice reform will provide useful ways to improve staff skills in understanding all young people. There are few trainers and speakers nationwide who have lived in the dependent care system and now share both their insider's view linked with the latest research in positive youth development, resilience, strength-based approaches, and brain research. Seita's practical views are blended with inspirations and hope providing you with rare and unique insight by understanding the private logic of defiance often hidden in youth.

---

### In Whose Best Interest

Dr. John Seita communicates his own experience as a troubled, fatherless youth - who was removed from his alcoholic mother and experienced a dozen failed court-ordered placements - in foster care and institutional settings. Today, the former troubled youth holds a doctorate and is an expert on resilient youth. Seita reflects on the process of reclaiming adult-wary, rebellious youth and provides a blueprint for success with these challenging young people. To those who propose that troubled youth should be discarded through policies of zero tolerance and harsh punishment, Seita's experiences speak with profound moral authority. See your student/client anew and obtain new skills and confidence. This session, at its core, focuses on lessons learned for application and practice settings.

---

### Private Logic

In this session, Dr. Seita draws upon his own experience as an unclaimed youth to fling open the thinking behind the behaviors of adult-wary and angry youth. Kids who distrust adults are highly skilled at hiding their real nature and outsmarting anyone trying to reach them. Most adults either shun these youth or get locked in conflict with them. Instead of treating symptoms, looking for weaknesses and in blaming, Seita shares specific strategies for understanding the thinking of angry youth.

---

### The Private Logic of Connecting with Kids Who Outwit Adults

Finally, Dr. Seita creates specific strategies for connecting with the adult-wary youth whose own private logic is a powerful tool for staying disconnected. Seita demonstrates how private logic can be a tool for connecting rather than disconnecting. Included in the session are 12 specific, powerful approaches that can be used to connect adults with adult-wary young people.

# Bill Eddy

## Understanding and Managing High Conflict Personality Disorders Don't Alienate the Kids: Raising Resilient Children in a High Conflict World

**Bill Eddy** is a lawyer, therapist and mediator, and the President of the High Conflict Institute based in San Diego, California. As a lawyer, he is a Certified Family Law Specialist in California, where he has represented clients in family court for 15 years and provided divorce mediation services for over 20 years. Prior to that, he provided child and family counseling for 12 years in psychiatric hospitals and outpatient clinics as a Licensed Clinical Social Worker.

Mr. Eddy has written several books, including *High Conflict People in Legal Disputes* and *SPLITTING: Protecting Yourself While Divorcing Someone with Borderline or Narcissistic Personality Disorder*. In 2009, he developed the *New Ways for Families* short-term counseling program in use in several family court jurisdictions in the U. S. and Canada. In 2013, he developed the *New Ways for Mediation* method for high-conflict families.

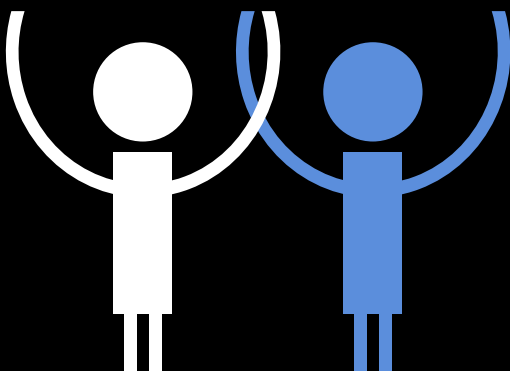
He is on the part-time faculties at the Pepperdine University School of Law and the National Judicial College. He has presented on managing high conflict personalities to lawyers, counselors, judges, mediators, human resource professionals, healthcare administrators, college administrators, law enforcement and home-owners associations in over 25 states, several provinces in Canada, Australia, New Zealand, France and Sweden. His websites are: [www.HighConflictInstitute.com](http://www.HighConflictInstitute.com), [www.NewWays4Families.com](http://www.NewWays4Families.com) and [www.BIFFResponse.com](http://www.BIFFResponse.com).

### Understanding and Managing High-Conflict Personality Disorders

As professionals, you undoubtedly interact with high-conflict parents or clients in your work. Bill Eddy will help participants understand personality disorders by providing a brief overview of five personality disorders and their common high-conflict behavior, including: Borderline, Narcissistic, Histrionic, Antisocial, and Paranoid. He will explain recent brain research which indicates why many people shift dramatically from reasonable to extremely upset, with little apparent control over their emotions. Eddy will then present the "CARS Method for Managing High-Conflict Personalities." Four key skills will be presented for managing high conflict personalities in their disputes, which make up the "CARS Method," including: **Connecting** with Empathy, Attention and Respect; **Analyzing** Alternatives, including making and responding to proposals; **Responding to Hostility and Misinformation** including responses that are BIFF: Brief, Informative, Friendly and Firm; and **Setting** Limits with Empathy, Attention and Respect – and Consequences.

### Don't Alienate the Kids: Raising Resilient Children in a High Conflict World

Bill Eddy will provide a brief overview of child alienation: What it is, What it isn't, and Why it appears so often in families with one or more personality disorders. Family dynamics surrounding alienation will be explained. He will take a brief look at legal and mental health controversies and terminology. Eddy will address legal management methods, as courts and professionals can significantly influence the behavior of families with alienation issues, positively or negatively. Some guidelines will be presented to include the importance of professional behavior in these cases. He will then address counseling management methods, as these methods for intervention focus differently on mild, moderate or severe cases. Examples of structuring the counseling process will be explained, with a review of programs and methods, including the presenter's *New Ways for Families* method. Finally, applying a skills-focused approach in working with parents and children will be presented.



# Conference Sponsors

## Platinum Level

Amarillo College Criminal Justice Programs  
Texas Department of State Health Services -  
Health Service Region 1  
Tobacco Free Amarillo

## Gold Level

47th District Attorney's Office  
Randall County Criminal District Attorney's Office  
Southwest Dairy Farmers  
Superior Health Plan  
Texas Department of Family & Protective Services

## Silver Level

Girl Scouts of Texas Oklahoma Plains, Inc.  
Panhandle Regional Planning Commission  
Therapy 2000

## Bronze Level

Amerigroup  
Baptist Community Services  
Buckner Children and Family Services of Amarillo  
Cal Farley's Boys Ranch  
Happy State Bank  
Potter-Randall 9-1-1 ECD  
United Supermarkets

*Additional contributions may have been received but not listed in this document — all contributors will be recognized at the conference.*

# Supporting Organizations

Amarillo Area CASA, Inc.  
Amarillo College Center for Continuing Healthcare Education  
Amarillo College Child Development/  
Early Childhood Education  
Amarillo ISD Council of PTAs  
Amarillo Independent School District – School Counselors  
Amarillo Police Department  
Amarillo Wesley Community Center  
American Cancer Society, Amarillo  
Arrow Child and Family Ministries  
The Bair Foundation  
The Bridge Children's Advocacy Center  
Bushland Independent School District  
Canyon Independent School District  
Canyon ISD Council of PTAs  
Canyon Police Department  
Children's Learning Centers  
Community Partners of Amarillo  
Family Support Services  
Golden Spread Council, Boy Scouts of America

Greater Amarillo Foster Parent Association  
High Plains Counseling Association  
Kids, Inc.  
Lutheran Social Services of Amarillo  
Managed Care Center for Addictive/Other Disorders, Inc.  
Panhandle Child Placement Services  
Potter County Juvenile Probation  
Potter County Sheriff's Office  
Potter-Randall Child Welfare Board  
P.R.I.D.E.  
Randall County Sheriff's Office  
Region 16 Education Service Center  
Texas Panhandle Centers – STAR & Children's Services  
Texas Tech University Health Sciences Center -  
Amarillo - Nurse-Family Partnership  
Texas Tech University Health Sciences Center -  
Amarillo - Pediatrics  
West Texas A&M University Social Work Program  
Youth Center of the High Plains/Randall County  
Juvenile Probation Department

*Child Abuse Prevention Advocates*

# Easy Online Registration

(for individual credit/debit card payments only)

1. Go to [www.actx.edu/ce](http://www.actx.edu/ce); at the top left of page, click "Find Classes"
2. In the Search box, type "Child Abuse Prevention" and click Search
3. Select the "Click to Register" button
4. Add to Cart and Proceed to Checkout

or

**CLICK HERE**

## Mail or Fax Registration

(for all payment types)

Amarillo College  
Criminal Justice Programs  
P. O. Box 447  
Amarillo, TX 79178

**Fax:** (806) 354-6074

### Registration Form: Child Abuse Prevention Conference – March 26, 2015 – ID #135291

Last 4 Digits of SSN or AC ID: \_\_\_\_\_ Date of Birth: \_\_\_\_\_

Last Name: \_\_\_\_\_ First Name: \_\_\_\_\_ M.I.: \_\_\_\_\_

Address: \_\_\_\_\_ City: \_\_\_\_\_

County: \_\_\_\_\_ State: \_\_\_\_\_ Zip: \_\_\_\_\_

Gender: ☐ Male ☐ Female Employer or Type of Business: \_\_\_\_\_

Home Phone: \_\_\_\_\_ Business Phone: \_\_\_\_\_

Personal E-Mail: \_\_\_\_\_ Business E-Mail: \_\_\_\_\_

Credit Type: ☐ TCOLE (PID# \_\_\_\_\_) ☐ TJJD ☐ CPE ☐ LPC/LMFT/SW ☐ Nurse ☐ Substance Abuse/LCDC ☐ General CEU

Ethnic Origin: (Voluntary Information - Will not affect enrollment)

Are you Hispanic? ☐ Yes ☐ No

What is your race? (check all that may apply):

☐ American Indian or Alaskan Native ☐ Asian ☐ Black or African-American ☐ White ☐ Native Hawaiian or Other Pacific Islander

I certify that the above information is complete and correct. Date: \_\_\_\_\_ Signature: \_\_\_\_\_

Method of Payment: ☐ Cash ☐ Check ☐ Money Order ☐ Visa ☐ MC ☐ Disc ☐ AmEx

Bill To: \_\_\_\_\_ P.O. #: \_\_\_\_\_ (Please include Letter of Billing or Copy of P.O.)

NOTE: If using a credit card to pay, please fax this form or place in an envelope for your protection.

Card No. \_\_\_\_\_ Exp. Date \_\_\_\_\_ Security Code \_\_\_\_\_ Signature \_\_\_\_\_

Any student, who because of a disabling condition may require some special arrangements in order to meet course requirements, should contact disAbility Services (SSC 119, Phone 371-5436) as soon as possible. **Enrollment Eligibility Notice:** Students with outstanding obligations to Amarillo College may not be allowed to enroll in or complete a continuing education course until the obligations are fulfilled. Students who have received a Criminal Trespass Warning from Amarillo College will not be allowed to enroll in courses held on any AC campus unless the warning has been lifted.