

HOUSING OFFICE



Address: 13810 NE 11th Ave. • Amarillo, TX 79111

FOR MORE INFORMATION:

Telephone:
(806) 335-4245

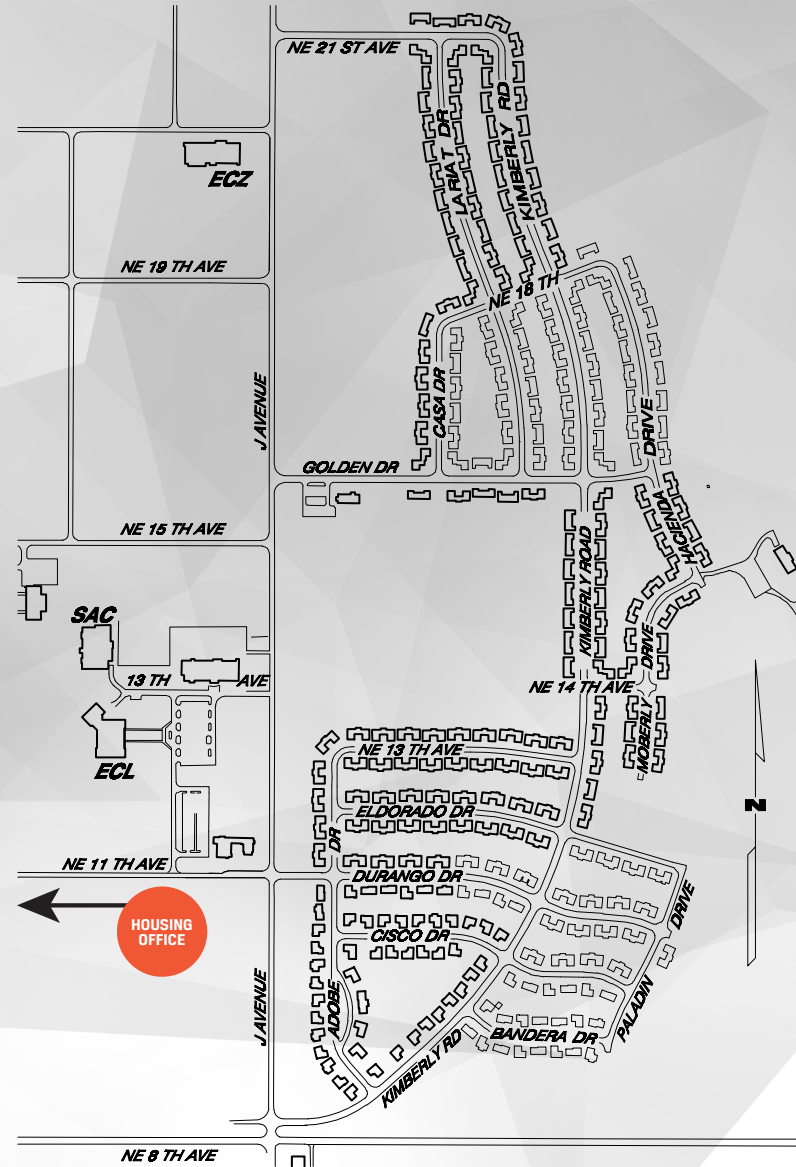
Fax:
(806) 335-4344

Email:
achousing@actx.edu

Regular Hours:
Monday-Friday
8 a.m. – 5 p.m.

Summer Hours:
Monday-Thursday
7:30 a.m. – 5 p.m.

Friday
7:30 a.m. – 12 p.m.



AMARILLO COLLEGE
HOUSING

ADDRESS:
13810 NE 11th Avenue
Amarillo, TX 79111

TELEPHONE:
(806) 335-4245

AMARILLO COLLEGE HOUSING FOR RENT

Everyone Welcome



15%
Discount for
AC students

FOR MORE INFORMATION:
(806) 335-4245
achousing@actx.edu

AC
Amarillo College

LOCATED AT EAST CAMPUS

We offer comfortable, affordable family housing in a relaxed neighborhood. It is open to students, faculty, staff, and the general public. We are in the Highland Park School District, and conveniently located near Amarillo Montessori Day School, Bell Helicopter, Rick Husband International Airport, DPS, CNS Pantex, Tyson, Potter Co. Detention Center, TDCJ, Progress Rail Service, Premier Truck Group, Excel Machinery, Coca-Cola, and several other businesses.

Features:

- Central Heat & Air
- Carpet & Tile
- Stoves, Refrigerators, Dishwashers & Garbage Disposals
- W/D Connections
- Over-sized Closets
- Covered Carports/Storage Unit

Important Information:

- Prospective tenants must be at least 21 years of age or be of familial status
- Pets: \$400 deposit per pet - Limit 2 (*Prior Approval Required*)
- 24-Hour Emergency Maintenance

SECURITY DEPOSIT: \$400

SINGLE STANDING HOMES

(Floor plans available upon request)

#8

3 BDR/1 ¾ BTH
1,465 SQ. FT.
\$940.00*

#9

3 BDR/1 ¾ BTH
1,522 SQ. FT.
\$955.00*

#10

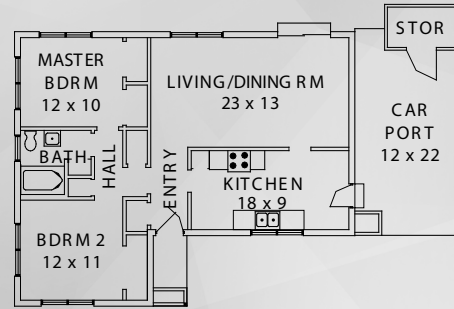
4 BDR/1 ¾ BTH
1,600 SQ. FT.
\$970.00*

#11

4 BDR/2 BTH
1,850 SQ. FT.
\$995.00*

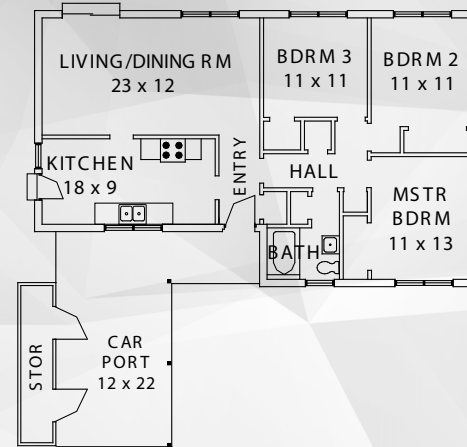
DUPLEX HOMES

LEASE TERMS: 12 MONTH LEASE



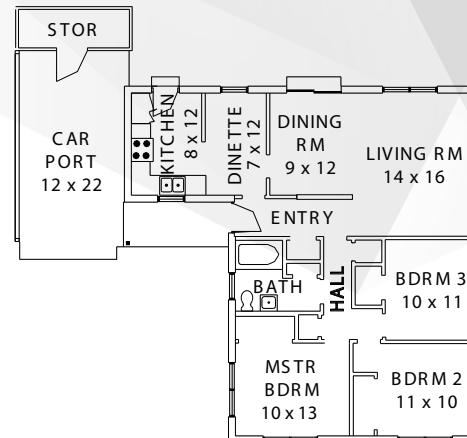
#1

2 BDR/1 BTH
964 SQ. FT.
\$670.00*



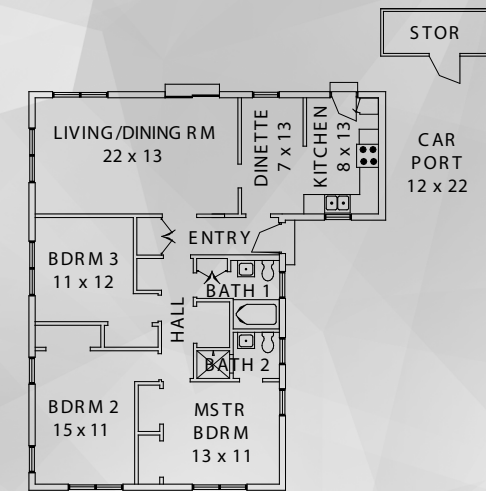
#2

3 BDR/1 BTH
1,126 SQ. FT.
\$725.00*



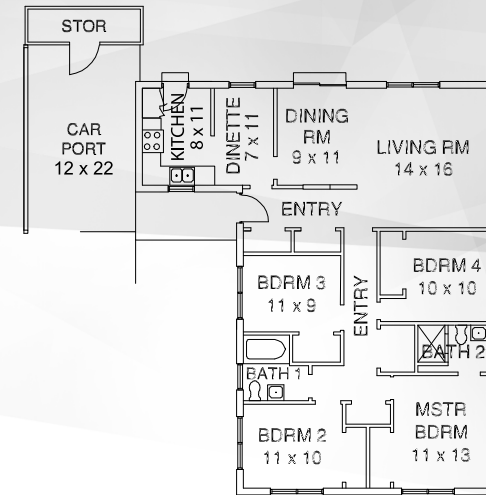
#4

3 BDR/1 BTH
1,211 SQ. FT.
\$750.00*



#6

3 BDR/1 ¾ BTH
1,349 SQ. FT.
\$860.00*



#7

4 BDR/1 ¾ BTH
1,398 SQ. FT.
\$890.00*

***PRICES**
subject to change